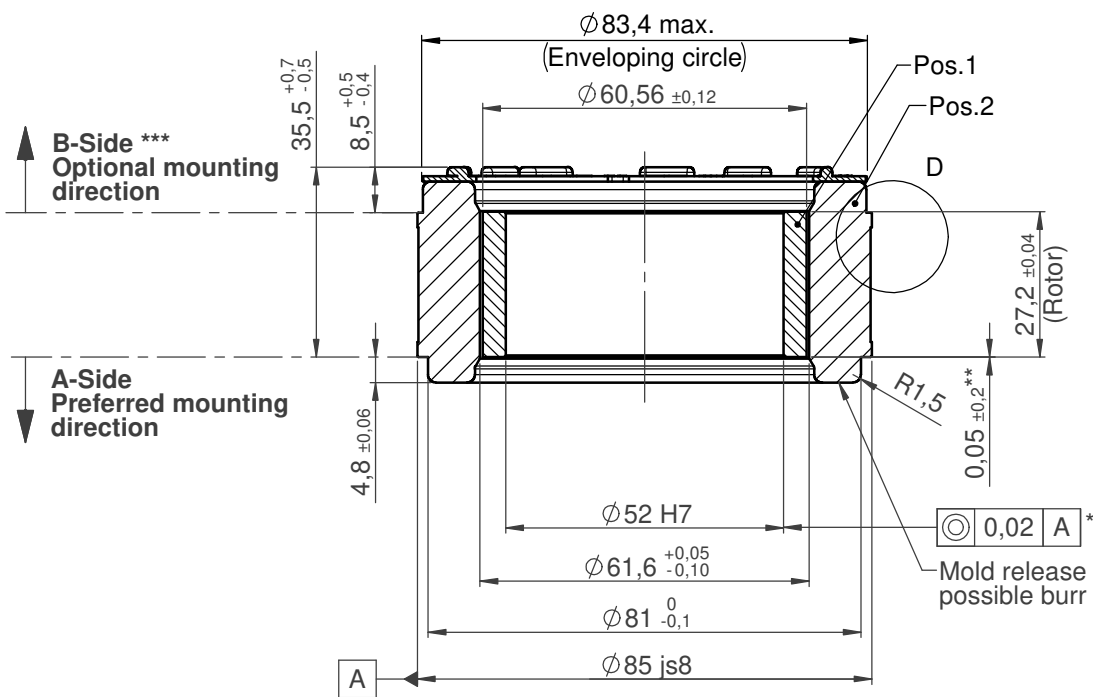


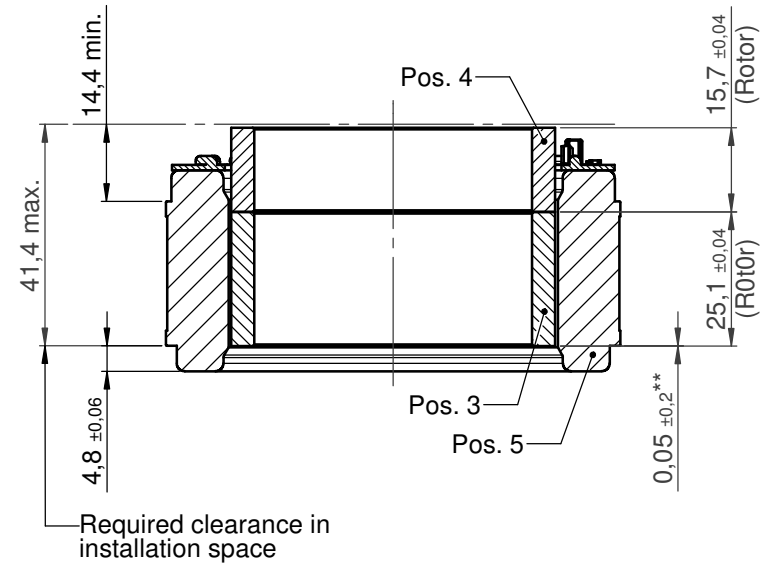
**ILM85x26 SERVO KIT PCB
ILM85x26 SERVO KIT PCB-T**

Section A-A

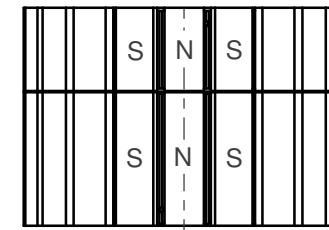


**ILM85x26 SERVO KIT PCB-HD
ILM85x26 SERVO KIT PCB-HD-T**

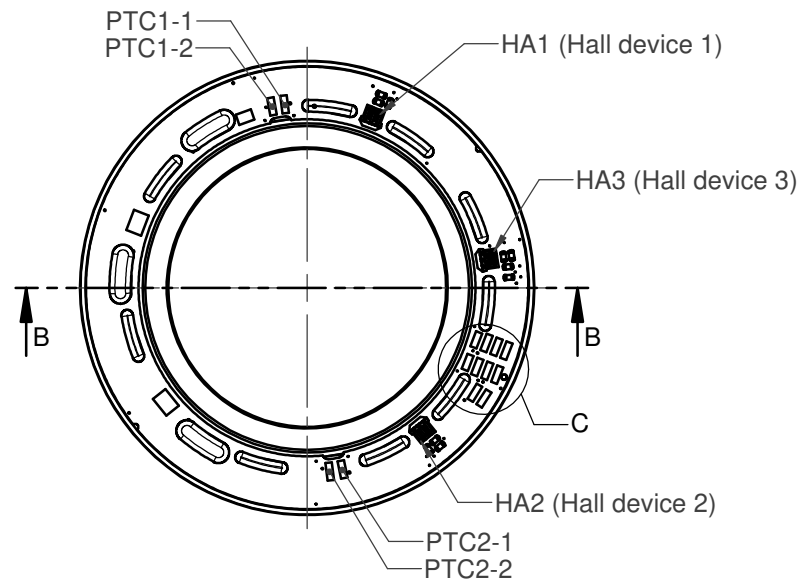
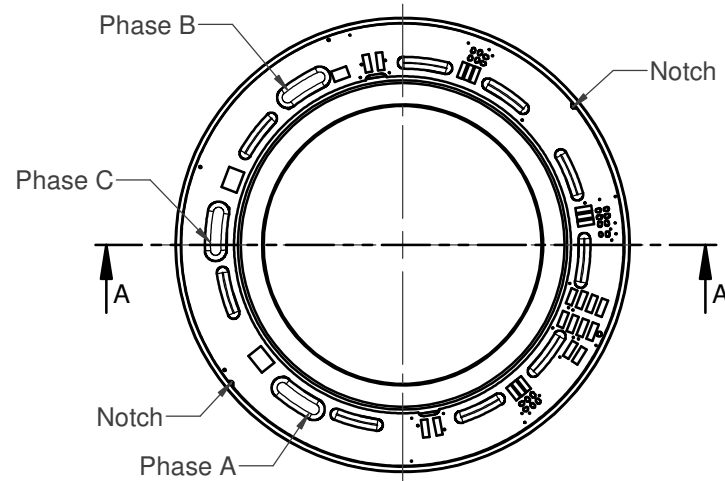
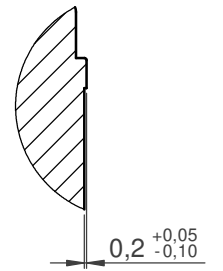
Section B-B



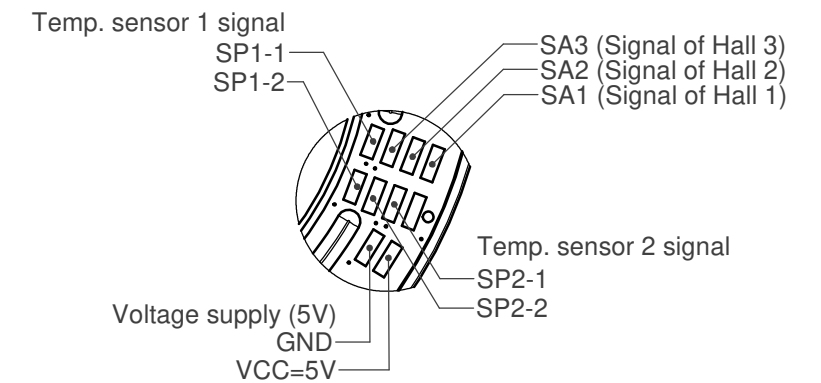
DETAIL D
Scale 2 : 1



Rotor:
pay attention to the location
of the poles



DETAIL C
Scale 2:1



For further technical information please refer to the datasheet
DRVA_DB-ILM-Kits_ILM85x26_Rev200

* In assembly

** Rotor position in relation to stator mounting edge

*** B-Side mounting requires additional TQ design support

Housing and shaft design according to installation dimensions of
motor housing and motor shaft.

Compliant to EU-RoHS and EU-REACH, latest edition.

ECR Number		ECR Name		ECR Description		Engineering code E-00108481.01	
	Prepared	12.02.2019	MeindlA	Material			
	Checked	17.07.2019	Loos	Part name ILM85x26 SERVO KIT PCB Info			
	Approved	22.10.2019	Schwelle	Number Rev. Ind. Sheet			
		Confidentiality level		Scale 1:1		Format A2	
Mass	Volume	Scale 1:1		Format A2		317932.0100 1/4	

The reproduction, distribution and utilization of this document as well as the communication of its contents to others without express authorization is prohibited. Offenders will be held liable for the payment of damages. All rights reserved in the event of the grant of a patent, utility model or design.

ILM85x26 SERVO KIT PCB (Interconnection Type)

Identification	Position 1			Position 2		
	Order number	Order name	Amount	Order number	Order name	Amount
ILM85x26 SERVO KIT STD VSS	230576.0100	ILM85x26 Rotor	1	304397.0100	ILM85x26 Stator STD VSS	1
ILM85x26 SERVO KIT STD VSP	230576.0100	ILM85x26 Rotor	1	315603.0100	ILM85x26 Stator STD VSP	1
ILM85x26 SERVO KIT STD VDS	230576.0100	ILM85x26 Rotor	1	315607.0100	ILM85x26 Stator STD VDS	1
ILM85x26 SERVO KIT STD VDP	230576.0100	ILM85x26 Rotor	1	315609.0100	ILM85x26 Stator STD VDP	1
ILM85x26 SERVO KIT HS VSS	230576.0100	ILM85x26 Rotor	1	315570.0100	ILM85x26 Stator HS VSS	1
ILM85x26 SERVO KIT HS VSP	230576.0100	ILM85x26 Rotor	1	315582.0100	ILM85x26 Stator HS VSP	1
ILM85x26 SERVO KIT HS VDS	230576.0100	ILM85x26 Rotor	1	315586.0100	ILM85x26 Stator HS VDS	1
ILM85x26 SERVO KIT HS VDP	230576.0100	ILM85x26 Rotor	1	315588.0100	ILM85x26 Stator HS VDP	1

ILM85x26 SERVO KIT PCB-T (Option: Temperature sensor)

Identification	Position 1			Position 2		
	Order number	Order name	Amount	Order number	Order name	Amount
ILM85x26 SERVO KIT STD VSS-T	230576.0100	ILM85x26 Rotor	1	315734.0100	ILM85x26 Stator STD VSS-T	1
ILM85x26 SERVO KIT STD VSP-T	230576.0100	ILM85x26 Rotor	1	315735.0100	ILM85x26 Stator STD VSP-T	1
ILM85x26 SERVO KIT STD VDS-T	230576.0100	ILM85x26 Rotor	1	315736.0100	ILM85x26 Stator STD VDS-T	1
ILM85x26 SERVO KIT STD VDP-T	230576.0100	ILM85x26 Rotor	1	315737.0100	ILM85x26 Stator STD VDP-T	1
ILM85x26 SERVO KIT HS VSS-T	230576.0100	ILM85x26 Rotor	1	315711.0100	ILM85x26 Stator HS VSS-T	1
ILM85x26 SERVO KIT HS VSP-T	230576.0100	ILM85x26 Rotor	1	315729.0100	ILM85x26 Stator HS VSP-T	1
ILM85x26 SERVO KIT HS VDS-T	230576.0100	ILM85x26 Rotor	1	315731.0100	ILM85x26 Stator HS VDS-T	1
ILM85x26 SERVO KIT HS VDP-T	230576.0100	ILM85x26 Rotor	1	315732.0100	ILM85x26 Stator HS VDP-T	1

ILM85x26 SERVO KIT PCB-HD (Option: Hall Digital commutation)

Identification	Position 3			Position 4			Position 5		
	Order number	Order name	Amount	Order number	Order name	Amount	Order number	Order name	Amount
ILM85x26 SERVO KIT STD VSS-HD	286841.0101	ILM85x23 Rotor	1	176074.0100	ILM85x13 Rotor	1	315602.0100	ILM85x26 Stator STD VSS-HD	1
ILM85x26 SERVO KIT STD VSP-HD	286841.0101	ILM85x23 Rotor	1	176074.0100	ILM85x13 Rotor	1	315605.0100	ILM85x26 Stator STD VSP-HD	1
ILM85x26 SERVO KIT STD VDS-HD	286841.0101	ILM85x23 Rotor	1	176074.0100	ILM85x13 Rotor	1	315608.0100	ILM85x26 Stator STD VDS-HD	1
ILM85x26 SERVO KIT STD VDP-HD	286841.0101	ILM85x23 Rotor	1	176074.0100	ILM85x13 Rotor	1	315705.0100	ILM85x26 Stator STD VDP-HD	1
ILM85x26 SERVO KIT HS VSS-HD	286841.0101	ILM85x23 Rotor	1	176074.0100	ILM85x13 Rotor	1	315571.0100	ILM85x26 Stator HS VSS-HD	1
ILM85x26 SERVO KIT HS VSP-HD	286841.0101	ILM85x23 Rotor	1	176074.0100	ILM85x13 Rotor	1	315584.0100	ILM85x26 Stator HS VSP-HD	1
ILM85x26 SERVO KIT HS VDS-HD	286841.0101	ILM85x23 Rotor	1	176074.0100	ILM85x13 Rotor	1	315587.0100	ILM85x26 Stator HS VDS-HD	1
ILM85x26 SERVO KIT HS VDP-HD	286841.0101	ILM85x23 Rotor	1	176074.0100	ILM85x13 Rotor	1	315592.0100	ILM85x26 Stator HS VDP-HD	1

ILM85x26 SERVO KIT PCB-HD-T (Option: Hall Digital commutation + Temperature sensor)

Identification	Position 3			Position 4			Position 5		
	Order number	Order name	Amount	Order number	Order name	Amount	Order number	Order name	Amount
ILM85x26 SERVO KIT STD VSS-HD-T	286841.0101	ILM85x23 Rotor	1	176074.0100	ILM85x13 Rotor	1	315707.0100	ILM85x26 Stator STD VSS-HD-T	1
ILM85x26 SERVO KIT STD VSP-HD-T	286841.0101	ILM85x23 Rotor	1	176074.0100	ILM85x13 Rotor	1	312403.0100	ILM85x26 Stator STD VSP-HD-T	1
ILM85x26 SERVO KIT STD VDS-HD-T	286841.0101	ILM85x23 Rotor	1	176074.0100	ILM85x13 Rotor	1	315709.0100	ILM85x26 Stator STD VDS-HD-T	1
ILM85x26 SERVO KIT STD VDP-HD-T	286841.0101	ILM85x23 Rotor	1	176074.0100	ILM85x13 Rotor	1	315710.0100	ILM85x26 Stator STD VDP-HD-T	1
ILM85x26 SERVO KIT HS VSS-HD-T	286841.0101	ILM85x23 Rotor	1	176074.0100	ILM85x13 Rotor	1	315594.0100	ILM85x26 Stator HS VSS-HD-T	1
ILM85x26 SERVO KIT HS VSP-HD-T	286841.0101	ILM85x23 Rotor	1	176074.0100	ILM85x13 Rotor	1	315596.0100	ILM85x26 Stator HS VSP-HD-T	1
ILM85x26 SERVO KIT HS VDS-HD-T	286841.0101	ILM85x23 Rotor	1	176074.0100	ILM85x13 Rotor	1	315598.0100	ILM85x26 Stator HS VDS-HD-T	1
ILM85x26 SERVO KIT HS VDP-HD-T	286841.0101	ILM85x23 Rotor	1	176074.0100	ILM85x13 Rotor	1	315600.0100	ILM85x26 Stator HS VDP-HD-T	1

Product configuration code:

ILM85x26 SERVO KIT XXX YYY - HD - T

Lamination grade:

STD Standard
HS High Speed

Interconnection:

VSS Star-Serial
VSP Star-Parallel
VDS Delta-Serial
VDP Delta-Parallel


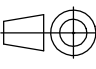
Feedback:

HD Hall Digital

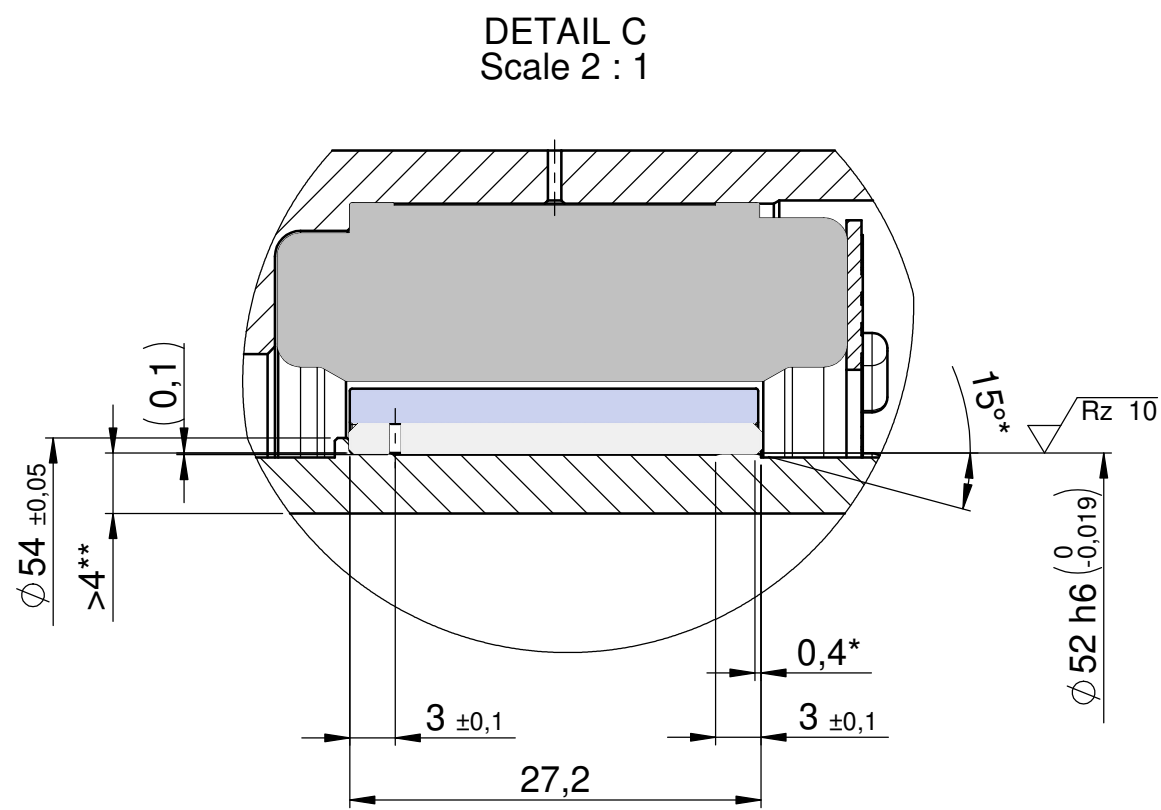
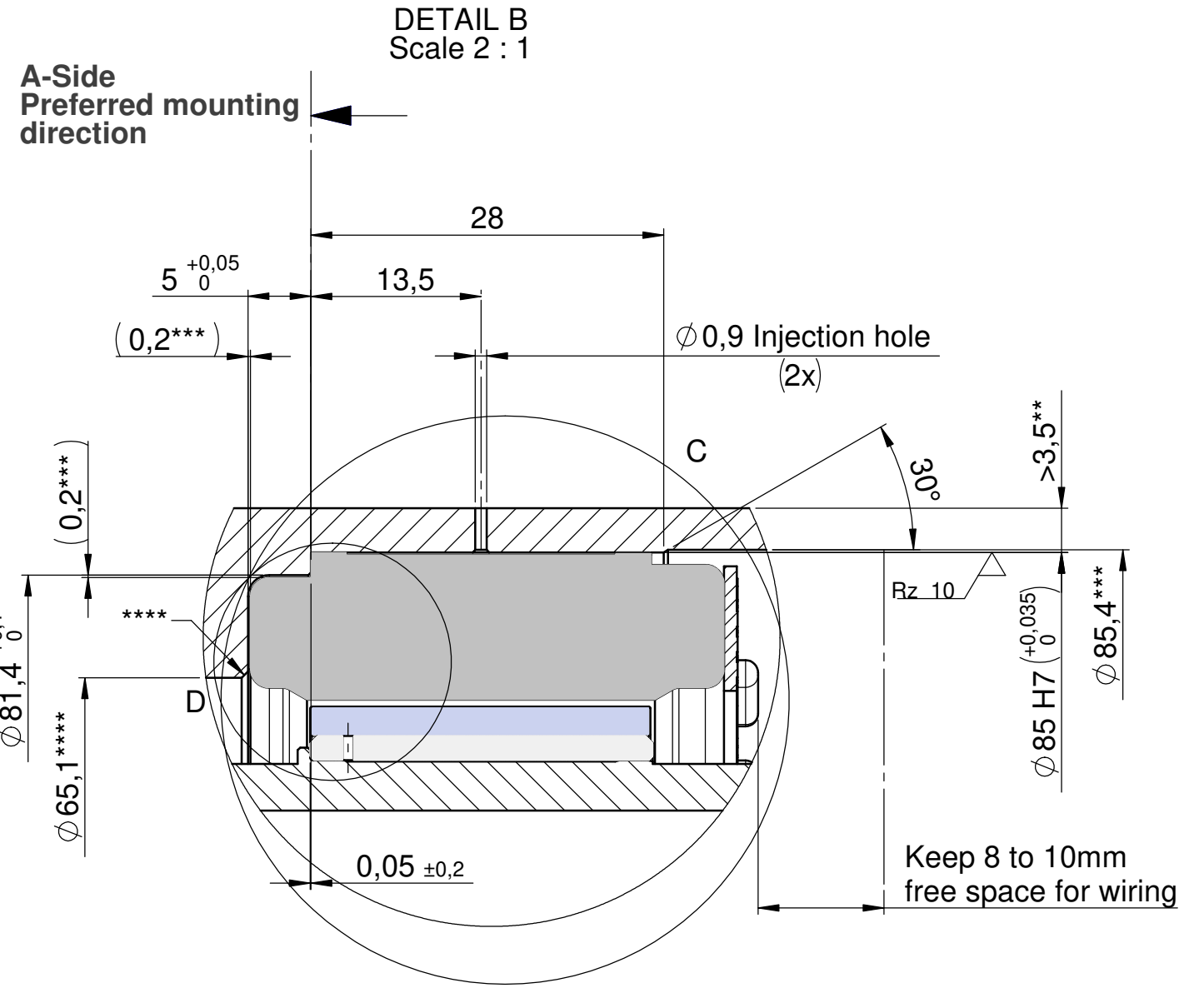
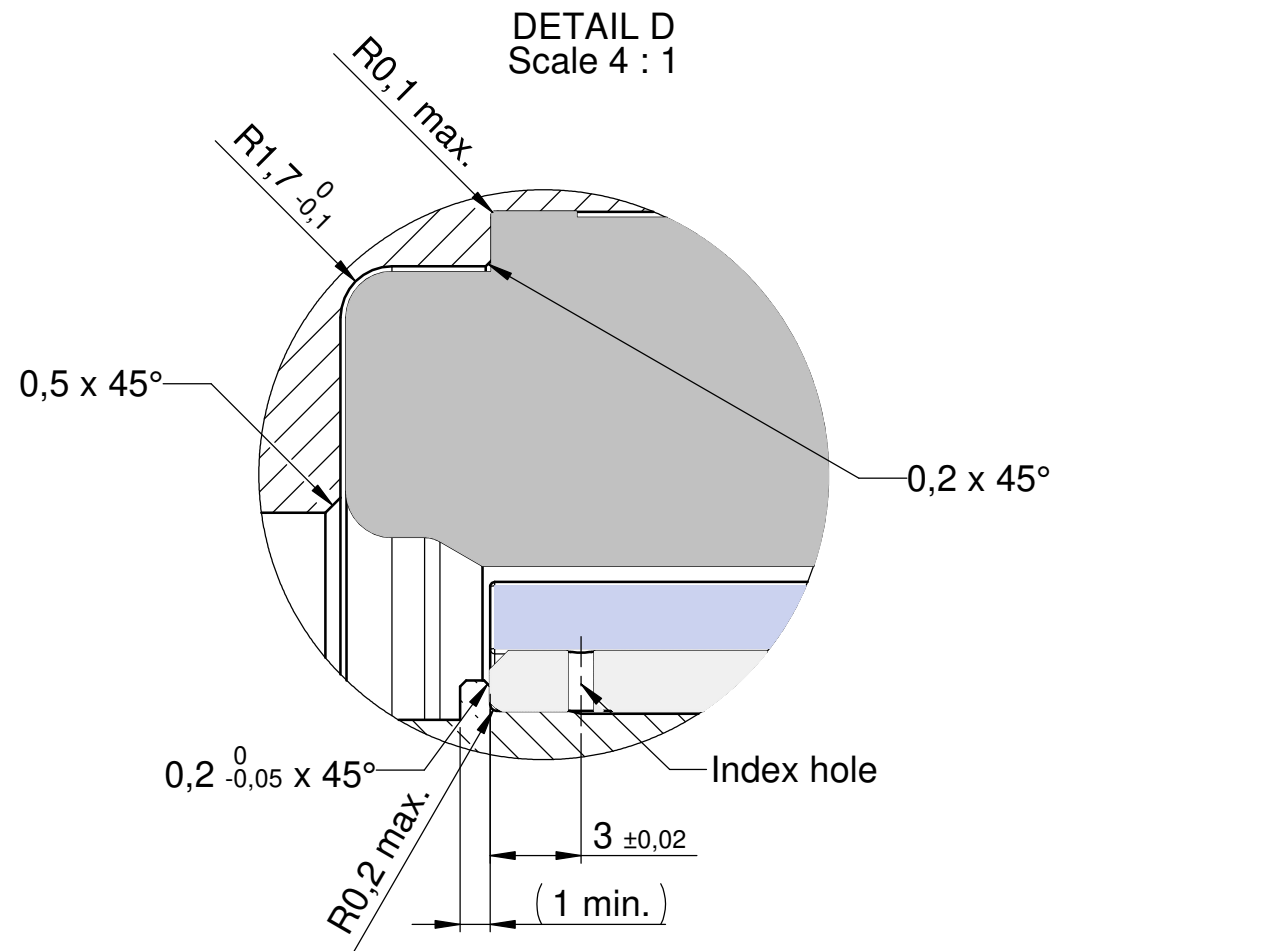
Configuration:

T Temperature sensor

Compliant to EU-RoHS and EU-REACH, latest edition.

ECR Number		ECR Name		ECR Description		Engineering code E-00108481.01				
		Date	Name	Material						
		Prepared	12.02.2019	MeindlA						
		Checked	17.07.2019	Loos	Part name ILM85x26 SERVO KIT PCB Info					
 ISO 8015		Approved	22.10.2019	Schwelle	Number			Rev.	Ind.	Sheet
Mass	Volume	Scale 1:1		Format A3	317932.0100		2/4			



The reproduction, distribution and utilization of this document as well as the communication of its contents to others without express authorization is prohibited. Offenders will be held liable for the payment of damages. All rights reserved in the event of the grant of a patent, utility model or design.



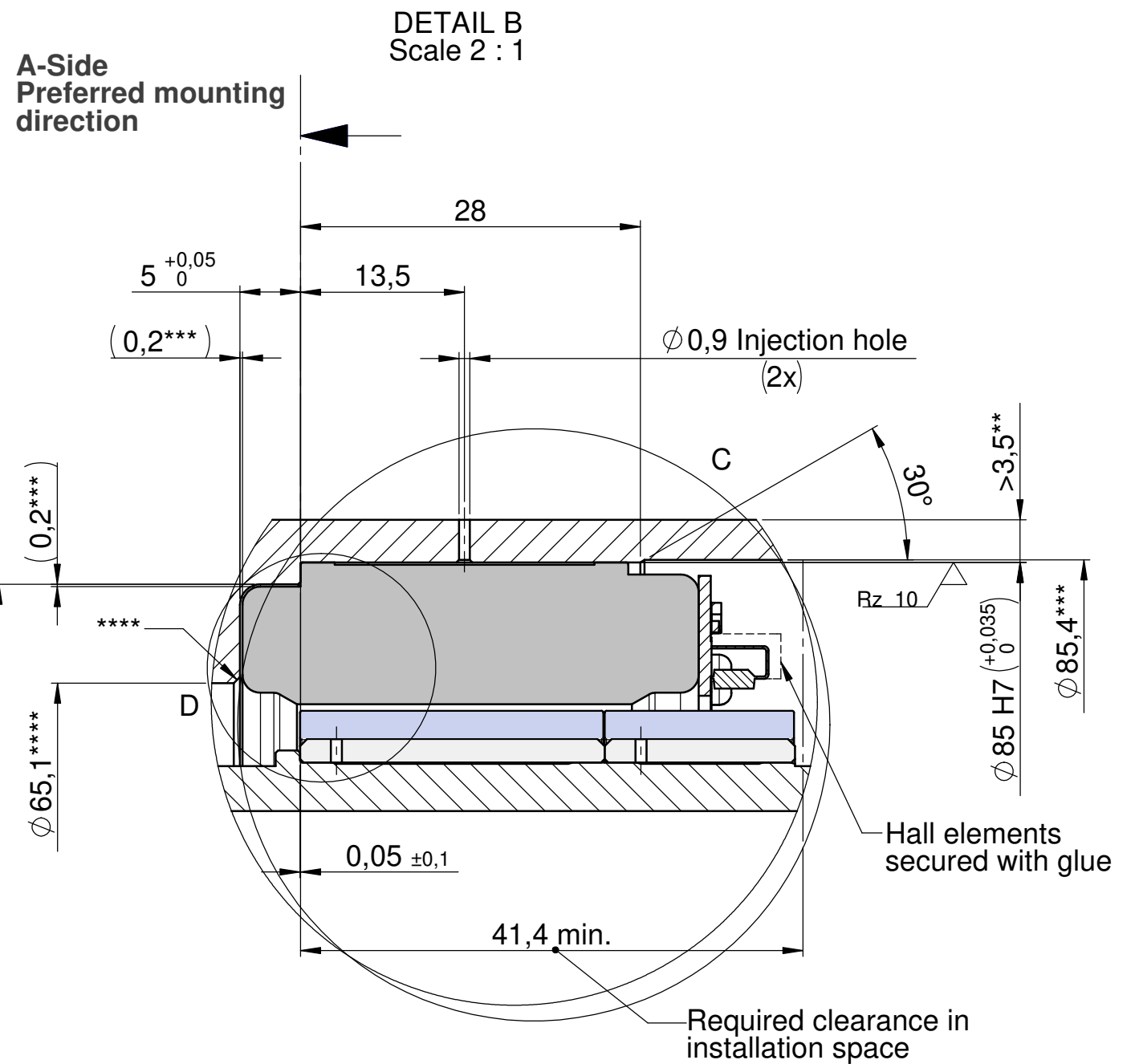
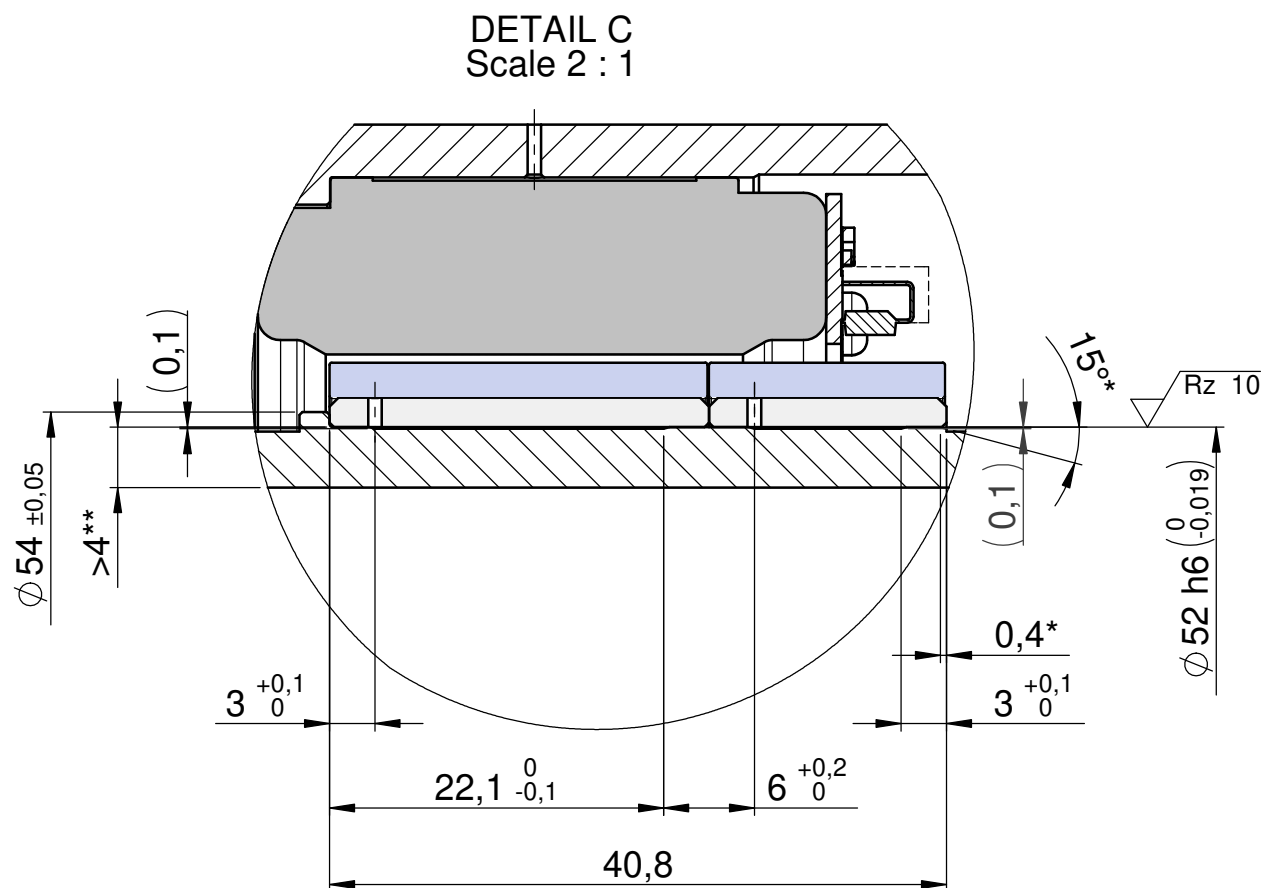
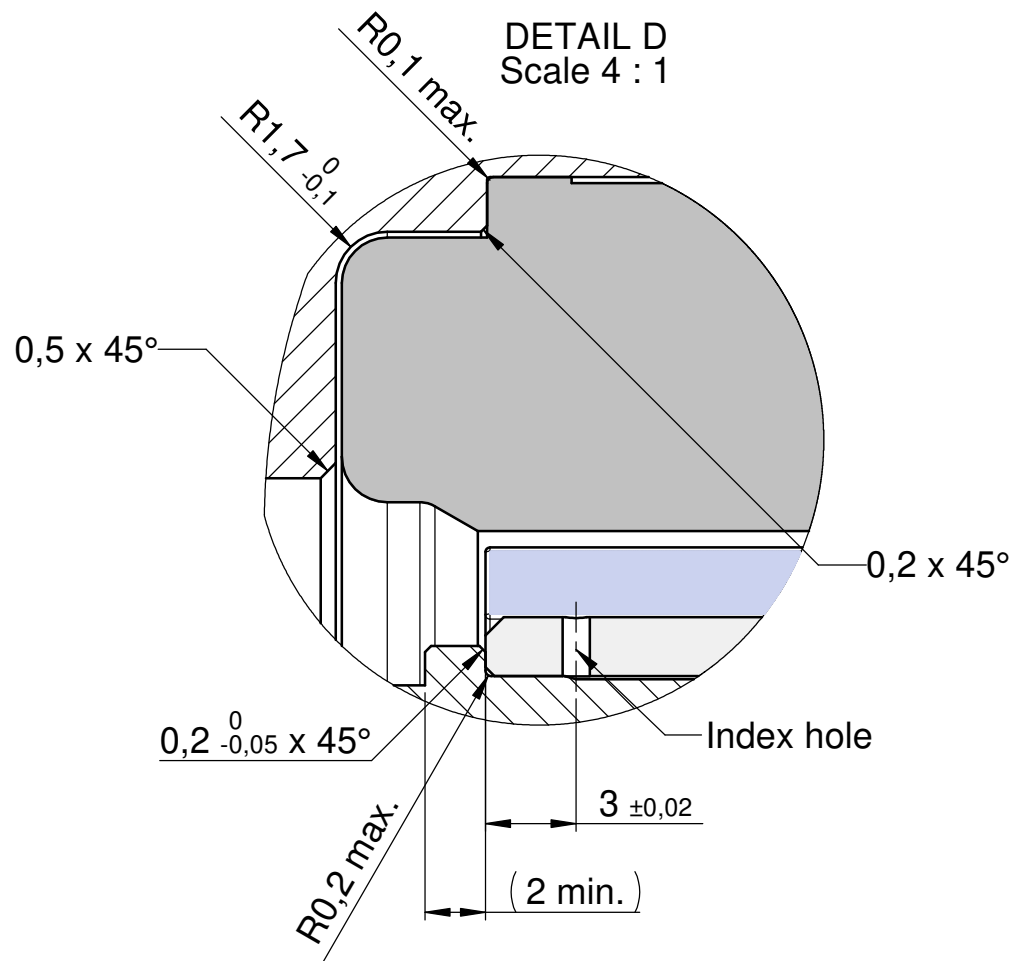
- * Recommended slip bevel
- ** Recommended wall thickness
- *** Suggested dimension for air and creeping distances (<50V) UL and NRTL certification
- **** Proposal to simplify cleaning after gluing

Rz 16 (✓) DIN ISO 13715 $\begin{matrix} -0,3 \\ -0,1 \end{matrix}$ $\begin{matrix} +0,3 \\ +0,1 \end{matrix}$

Compliant to EU-RoHS and EU-REACH, latest edition.

ECR Number		ECR Name		ECR Description		Engineering code E-00108481.01		
		Date	Name	Material				
		Prepared	12.02.2019	MeindlA				
		Checked	17.07.2019	Loos	Part name ILM85x26 Einbau Stator PCB / PCB-T - Rotor			
 units in mm		ISO 8015 DIN ISO 2768 f H		Approved 22.10.2019 Schwelle		Number Rev. Ind. Sheet		
Mass	Volume	Scale 1:1		Format A3		317932.0100		
						3/4		

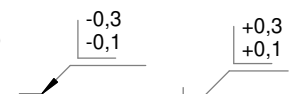
The reproduction, distribution and utilization of this document as well as the communication of its contents to others without express authorization is prohibited. Offenders will be held liable for the payment of damages. All rights reserved in the event of the grant of a patent, utility model or design.





- * Recommended slip level
- ** Recommended wall thickness
- *** Suggested dimension for air and creeping distances (<50V) UL and NRTL certification
- **** Proposal to simplify cleaning after gluing



DIN ISO 13715



Compliant to EU-RoHS and EU-REACH, latest edition.

ECR Number		ECR Name		ECR Description		Engineering code E-00108481.01		
		Date	Name	Material				
		Prepared	12.02.2019	MeindlA				
		Checked	17.07.2019	Loos	Part name ILM85x26 Einbau Stator PCB-HD / PCB-HD-T - Rotor			
 units in mm		ISO 8015 DIN ISO 2768 f H		Confidentially level		Number Rev. Ind. Sheet		
Mass	Volume	Scale 1:1		Format A3		317932.0100 4/4		