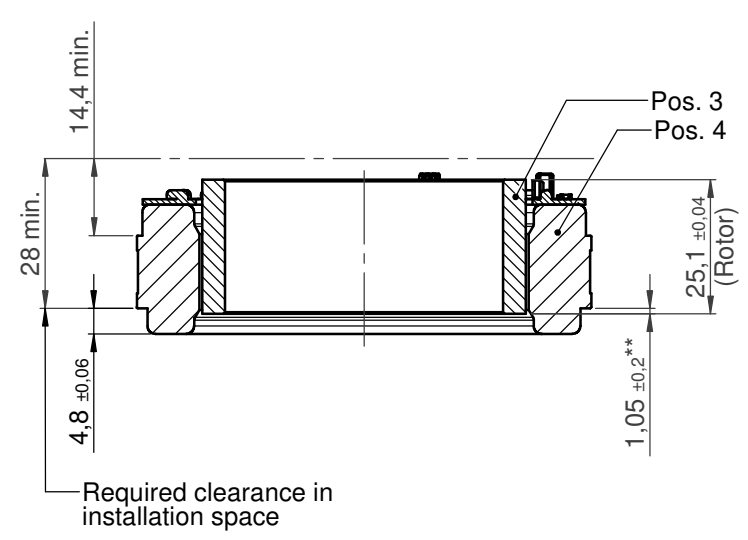
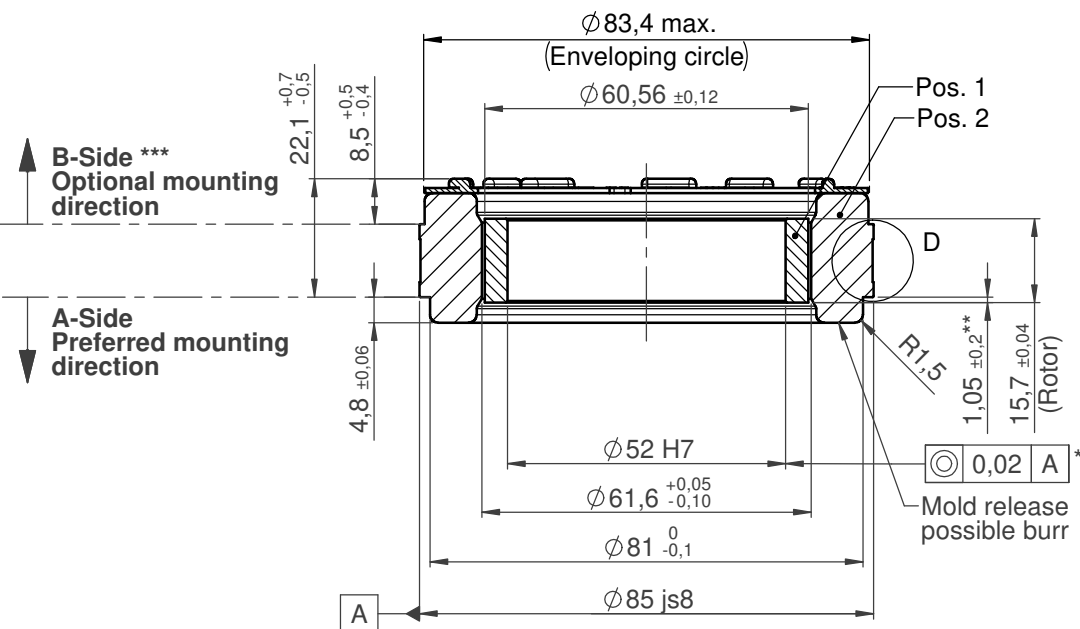


**ILM85x13 SERVO KIT PCB
ILM85x13 SERVO KIT PCB-T**

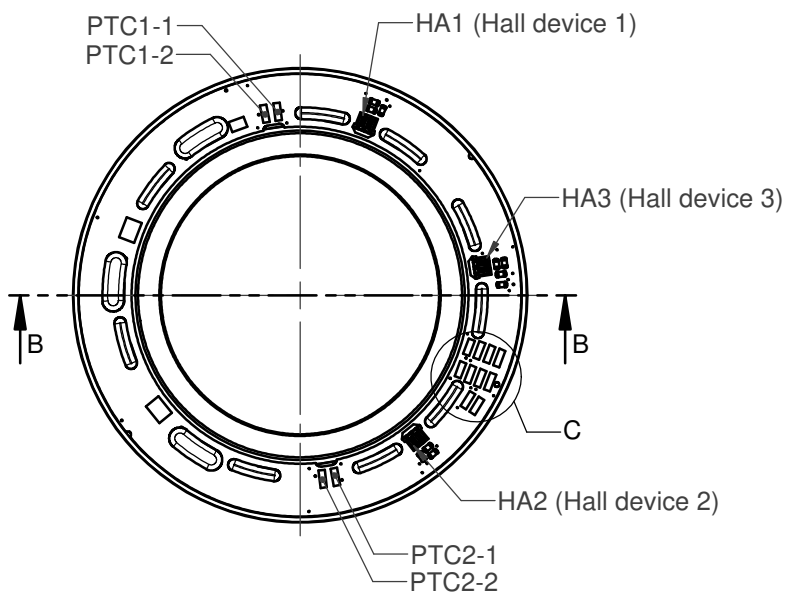
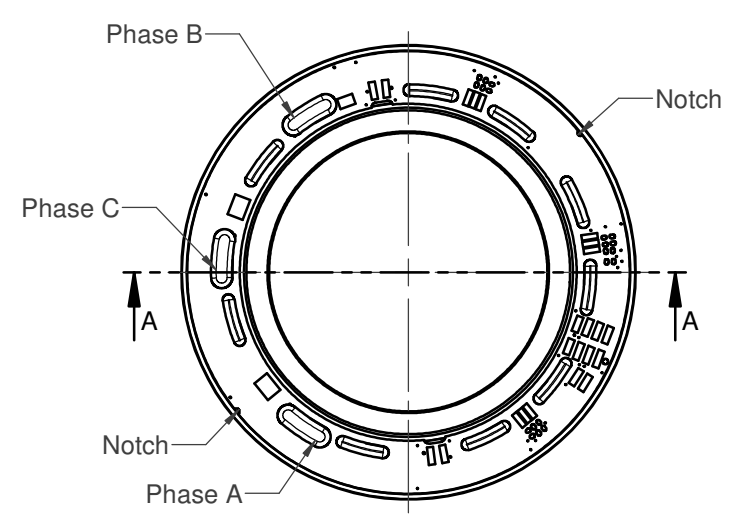
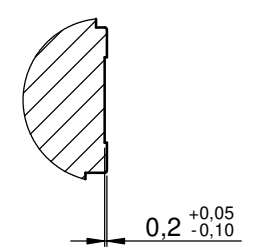
Section A-A

**ILM85x13 SERVO KIT PCB-HD
ILM85x13 SERVO KIT PCB-HD-T**

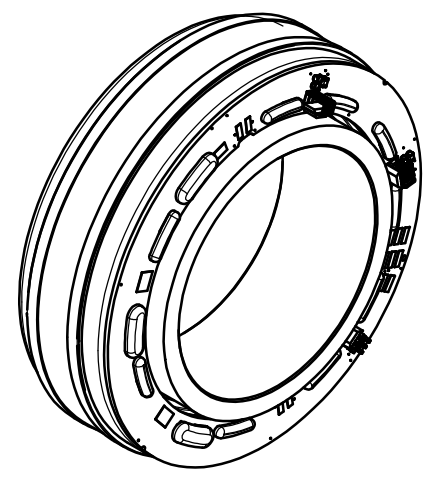
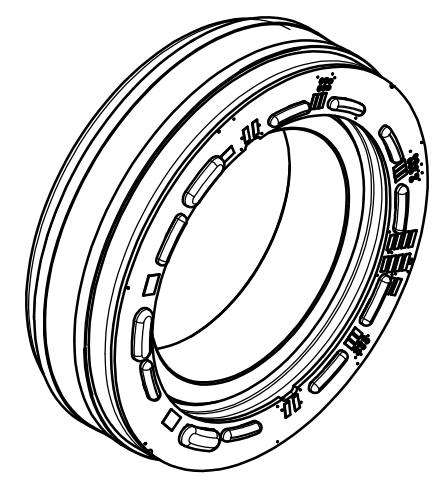
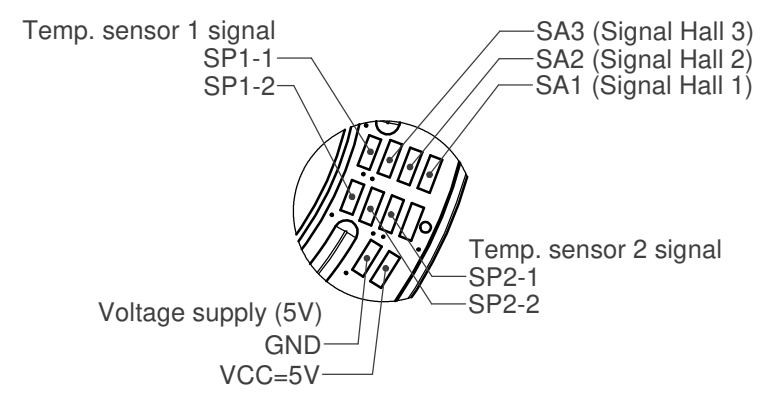
Section B-B



DETAIL D
Scale 2 : 1



DETAIL C
Scale 2:1



For further technical information please refer to the datasheet DRVA_DB-ILM-Kits_ILM85x13_Rev200

- * In assembly
- ** Rotor position in relation to stator mounting edge
- *** B-Side mounting requires additional TQ design support

Housing and shaft design according to installation dimensions of motor housing and motor shaft.

Compliant to EU-RoHS and EU-REACH, latest edition.

ECR Number		ECR Name		ECR Description		Engineering code E-00107665.01		
	Prepared	25.02.2019	Name	MeindlA		Part name ILM85x13 SERVO KIT PCB Info		
	Checked	21.10.2019	Loos					
	Approved	22.10.2019	Schwelle					
	ISO 8015 DIN ISO 2768 f H		Confidentiality level		Number		Rev.	
Mass	Volume	Scale 1:1		Format	A2		Ind. Sheet	
						317931.0100		1/4

The reproduction, distribution and utilization of this document as well as the communication of its contents to others without express authorization is prohibited. Offenders will be held liable for the payment of damages. All rights reserved in the event of the grant of a patent, utility model or design.

The reproduction, distribution and utilization of this document as well as the communication of its contents to others without express authorization is prohibited. Offenders will be held liable for the payment of damages. All rights reserved in the event of the grant of a patent, utility model or design.

ILM85x13 SERVO KIT PCB (Interconnection Type)

Identification	Position 1			Position 2		
	Order number	Order name	Amount	Order number	Order name	Amount
ILM85x13 SERVO KIT STD VSS	176074.0100	ILM85x13 Rotor	1	307581.0100	ILM85x13 Stator STD VSS	1
ILM85x13 SERVO KIT STD VSP	176074.0100	ILM85x13 Rotor	1	312433.0100	ILM85x13 Stator STD VSP	1
ILM85x13 SERVO KIT STD VDS	176074.0100	ILM85x13 Rotor	1	315470.0100	ILM85x13 Stator STD VDS	1
ILM85x13 SERVO KIT STD VDP	176074.0100	ILM85x13 Rotor	1	312437.0100	ILM85x13 Stator STD VDP	1
ILM85x13 SERVO KIT HS VSS	176074.0100	ILM85x13 Rotor	1	315437.0100	ILM85x13 Stator HS VSS	1
ILM85x13 SERVO KIT HS VSP	176074.0100	ILM85x13 Rotor	1	315442.0100	ILM85x13 Stator HS VSP	1
ILM85x13 SERVO KIT HS VDS	176074.0100	ILM85x13 Rotor	1	315445.0100	ILM85x13 Stator HS VDS	1
ILM85x13 SERVO KIT HS VDP	176074.0100	ILM85x13 Rotor	1	315461.0100	ILM85x13 Stator HS VDP	1

ILM85x13 SERVO KIT PCB-T (Option: Temperature sensor)

Identification	Position 1			Position 2		
	Order number	Order name	Amount	Order number	Order name	Amount
ILM85x13 SERVO KIT STD VSS-T	176074.0100	ILM85x13 Rotor	1	315490.0100	ILM85x13 Stator STD VSS-T	1
ILM85x13 SERVO KIT STD VSP-T	176074.0100	ILM85x13 Rotor	1	312285.0100	ILM85x13 Stator STD VSP-T	1
ILM85x13 SERVO KIT STD VDS-T	176074.0100	ILM85x13 Rotor	1	315481.0100	ILM85x13 Stator STD VDS-T	1
ILM85x13 SERVO KIT STD VDP-T	176074.0100	ILM85x13 Rotor	1	315482.0100	ILM85x13 Stator STD VDP-T	1
ILM85x13 SERVO KIT HS VSS-T	176074.0100	ILM85x13 Rotor	1	315486.0100	ILM85x13 Stator HS VSS-T	1
ILM85x13 SERVO KIT HS VSP-T	176074.0100	ILM85x13 Rotor	1	315487.0100	ILM85x13 Stator HS VSP-T	1
ILM85x13 SERVO KIT HS VDS-T	176074.0100	ILM85x13 Rotor	1	315488.0100	ILM85x13 Stator HS VDS-T	1
ILM85x13 SERVO KIT HS VDP-T	176074.0100	ILM85x13 Rotor	1	315489.0100	ILM85x13 Stator HS VDP-T	1

ILM85x13 SERVO KIT PCB-HD (Option: Hall Digital commutation)

Identification	Position 3			Position 4		
	Order number	Order name	Amount	Order number	Order name	Amount
ILM85x13 SERVO KIT STD VSS-HD	286841.0101	ILM85x23 Rotor	1	315467.0100	ILM85x13 Stator STD VSS-HD	1
ILM85x13 SERVO KIT STD VSP-HD	286841.0101	ILM85x23 Rotor	1	315469.0100	ILM85x13 Stator STD VSP-HD	1
ILM85x13 SERVO KIT STD VDS-HD	286841.0101	ILM85x23 Rotor	1	315471.0100	ILM85x13 Stator STD VDS-HD	1
ILM85x13 SERVO KIT STD VDP-HD	286841.0101	ILM85x23 Rotor	1	315472.0100	ILM85x13 Stator STD VDP-HD	1
ILM85x13 SERVO KIT HS VSS-HD	286841.0101	ILM85x23 Rotor	1	315441.0100	ILM85x13 Stator HS VSS-HD	1
ILM85x13 SERVO KIT HS VSP-HD	286841.0101	ILM85x23 Rotor	1	315443.0100	ILM85x13 Stator HS VSP-HD	1
ILM85x13 SERVO KIT HS VDS-HD	286841.0101	ILM85x23 Rotor	1	315460.0100	ILM85x13 Stator HS VDS-HD	1
ILM85x13 SERVO KIT HS VDP-HD	286841.0101	ILM85x23 Rotor	1	315462.0100	ILM85x13 Stator HS VDP-HD	1

ILM85x13 SERVO KIT PCB-HD-T (Option: Hall Digital commutation + Temperature sensor)

Identification	Position 3			Position 4		
	Order number	Order name	Amount	Order number	Order name	Amount
ILM83x13 SERVO KIT STD VSS-HD-T	286841.0101	ILM85x23 Rotor	1	313604.0100	ILM85x13 Stator STD VSS-HD-T	1
ILM85x13 SERVO KIT STD VSP-HD-T	286841.0101	ILM85x23 Rotor	1	315479.0100	ILM85x13 Stator STD VSP-HD-T	1
ILM85x13 SERVO KIT STD VDS-HD-T	286841.0101	ILM85x23 Rotor	1	315483.0100	ILM85x13 Stator STD VDS-HD-T	1
ILM85x13 SERVO KIT STD VDP-HD-T	286841.0101	ILM85x23 Rotor	1	315485.0100	ILM85x13 Stator STD VDP-HD-T	1
ILM85x13 SERVO KIT HS VSS-HD-T	286841.0101	ILM85x23 Rotor	1	315463.0100	ILM85x13 Stator HS VSS-HD-T	1
ILM85x13 SERVO KIT HS VSP-HD-T	286841.0101	ILM85x23 Rotor	1	315464.0100	ILM85x13 Stator HS VSP-HD-T	1
ILM85x13 SERVO KIT HS VDS-HD-T	286841.0101	ILM85x23 Rotor	1	315465.0100	ILM85x13 Stator HS VDS-HD-T	1
ILM85x13 SERVO KIT HS VDP-HD-T	286841.0101	ILM85x23 Rotor	1	315466.0100	ILM85x13 Stator HS VDP-HD-T	1

Product configuration code:

ILM85x13 SERVO KIT XXX YYY - HD - T

Lamination grade:

STD Standard
HS High Speed

Interconnection:

VSS Star-Serial
VSP Star-Parallel
VDS Delta-Serial
VDP Delta-Parallel


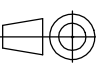
Feedback:

HD Hall Digital

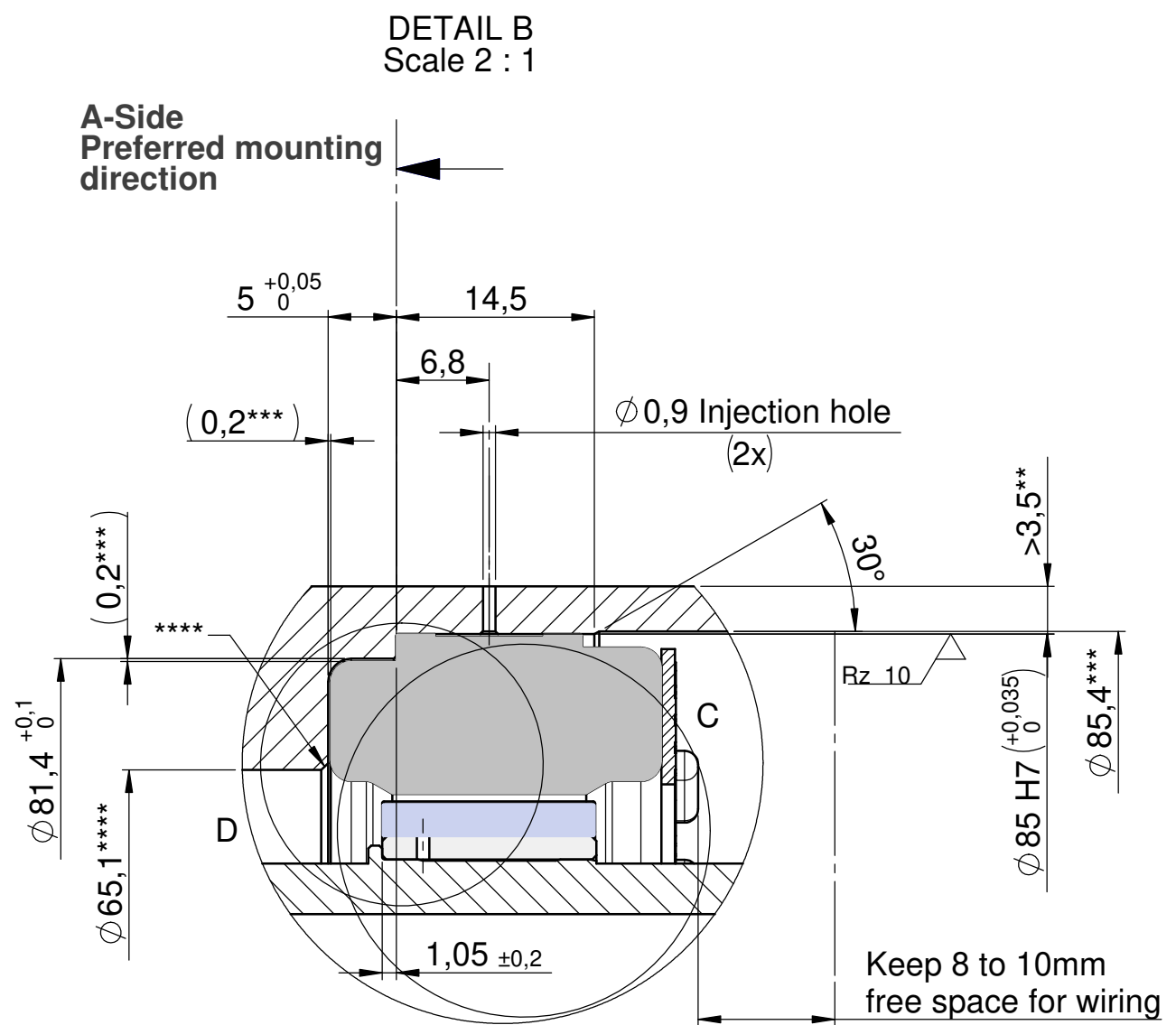
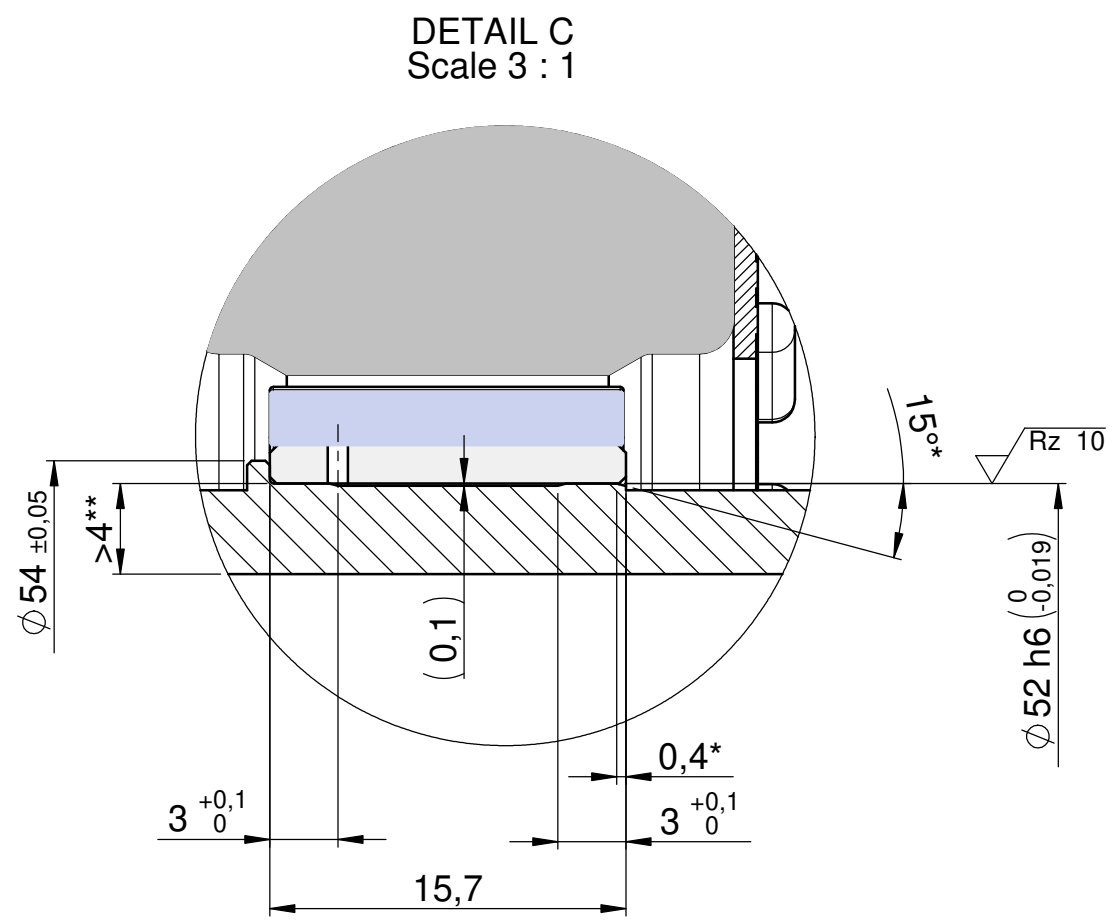
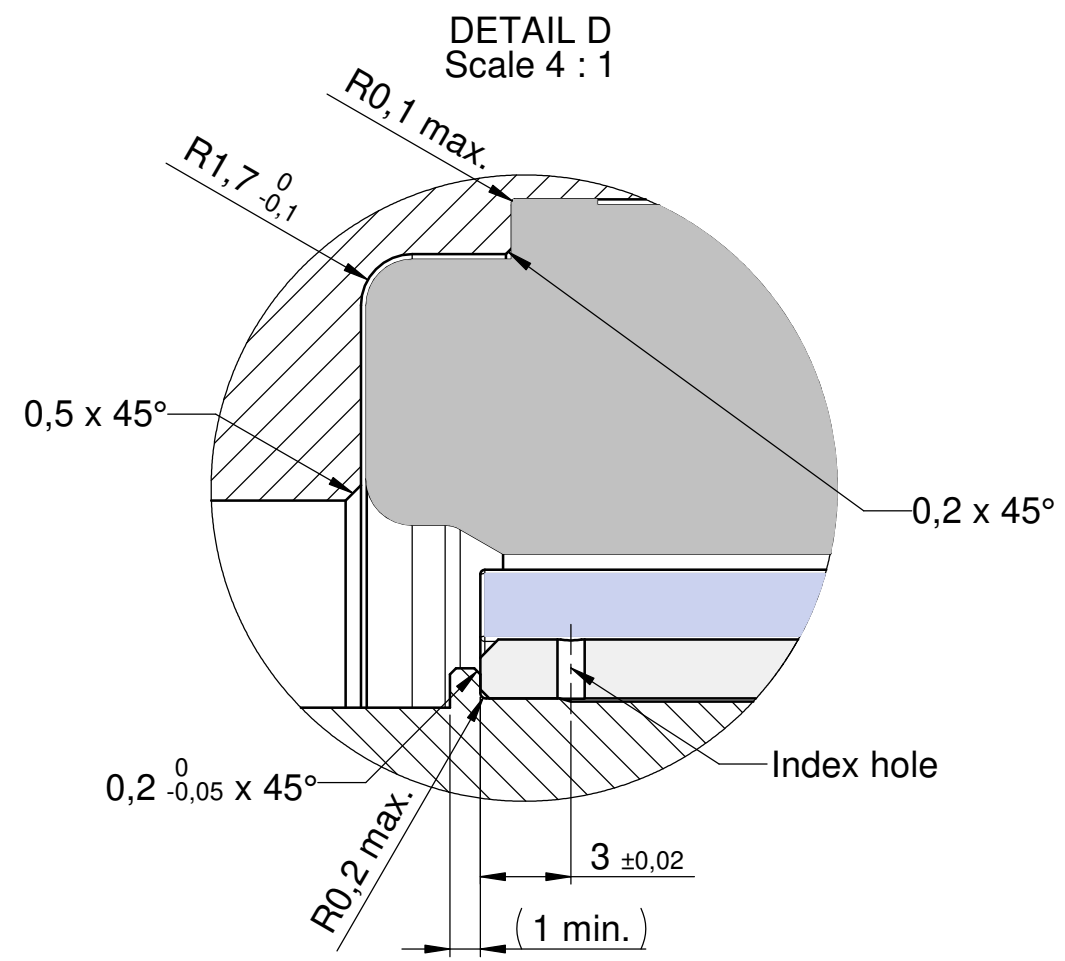
Configuration:

T Temperature sensor

Compliant to EU-RoHS and EU-REACH, latest edition.

ECR Number		ECR Name		ECR Description		Engineering code E-00107665.01				
		Date	Name	Material						
		Prepared	25.02.2019	MeindlA						
		Checked	21.10.2019	Loos	Part name ILM85x13 SERVO KIT PCB Info					
 ISO 8015		Approved	22.10.2019	Schwelle	Number			Rev.	Ind.	Sheet
Mass	Volume	Confidentially level		Scale 1:1		Format A3	317931.0100		2/4	

The reproduction, distribution and utilization of this document as well as the communication of its contents to others without express authorization is prohibited. Offenders will be held liable for the payment of damages. All rights reserved in the event of a patent, utility model or design.



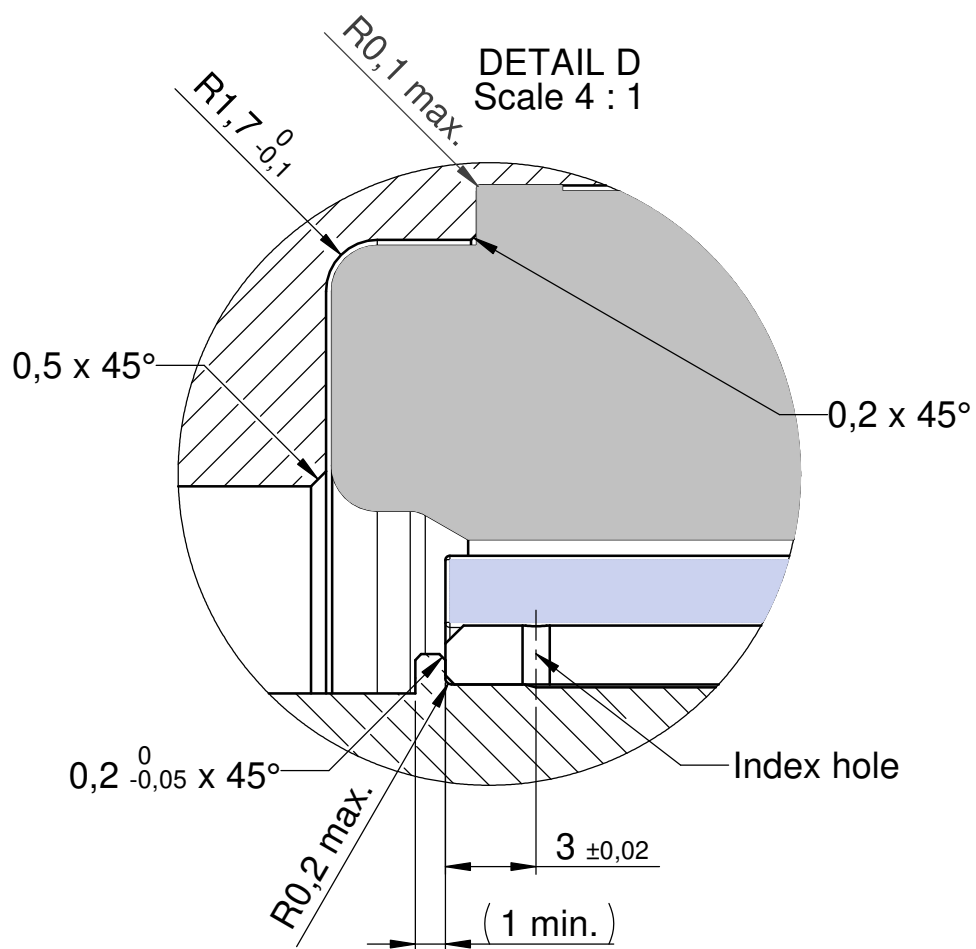
- * Recommended slip bevel
- ** Recommended wall thickness
- *** Suggested dimension for air and creeping distances (<50V) UL and NRTL certification
- **** Proposal to simplify cleaning after gluing

Rz 16 (✓) DIN ISO 13715 $\begin{matrix} -0,3 \\ -0,1 \end{matrix}$ $\begin{matrix} +0,3 \\ +0,1 \end{matrix}$

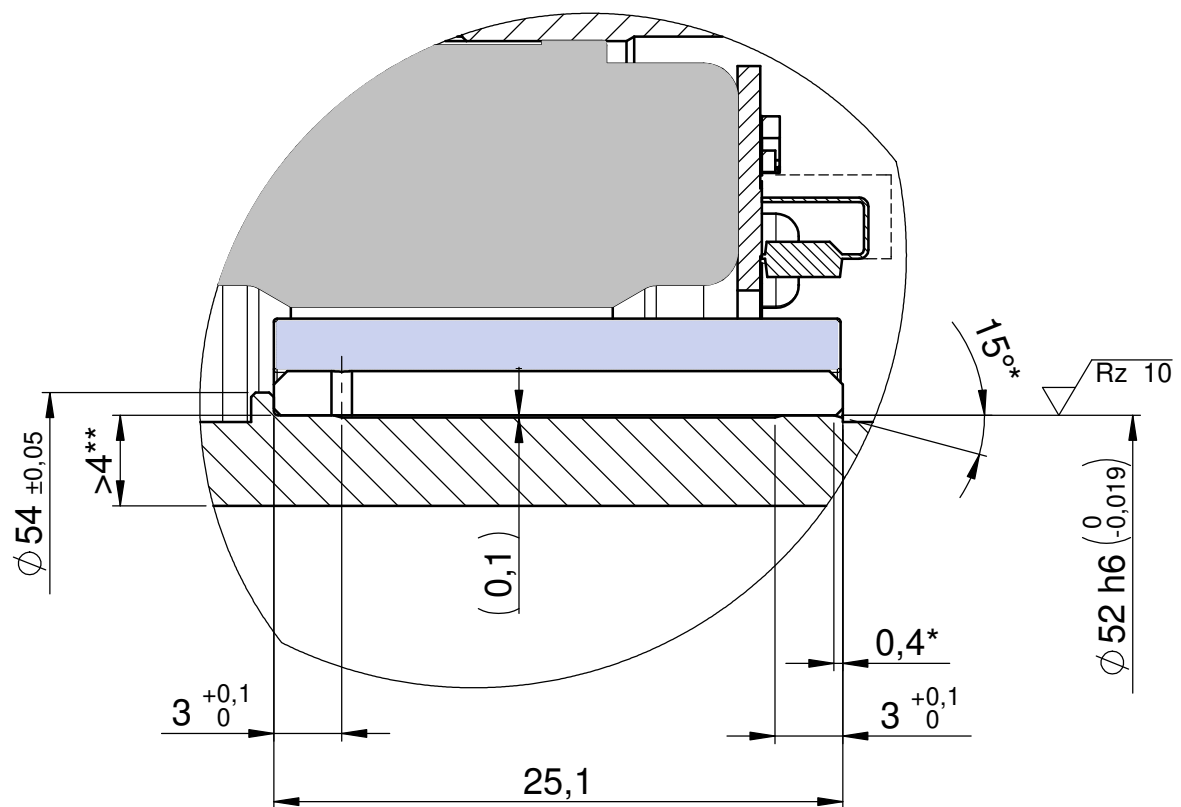
Compliant to EU-RoHS and EU-REACH, latest edition.

ECR Number		ECR Name		ECR Description		Engineering code E-00107665.01	
	Prepared	25.02.2019	MeindlA	Material			
	Checked	21.10.2019	Loos				
	Approved	22.10.2019	Schwelle				
ISO 8015 DIN ISO 2768 f H		Confidentially level		Part name ILM85x13 Einbau Stator PCB / PCB-T - Rotor			
		Scale 1:1					
Mass	Volume	Format A3		Number 317931.0100		Rev.	Ind. Sheet 3/4

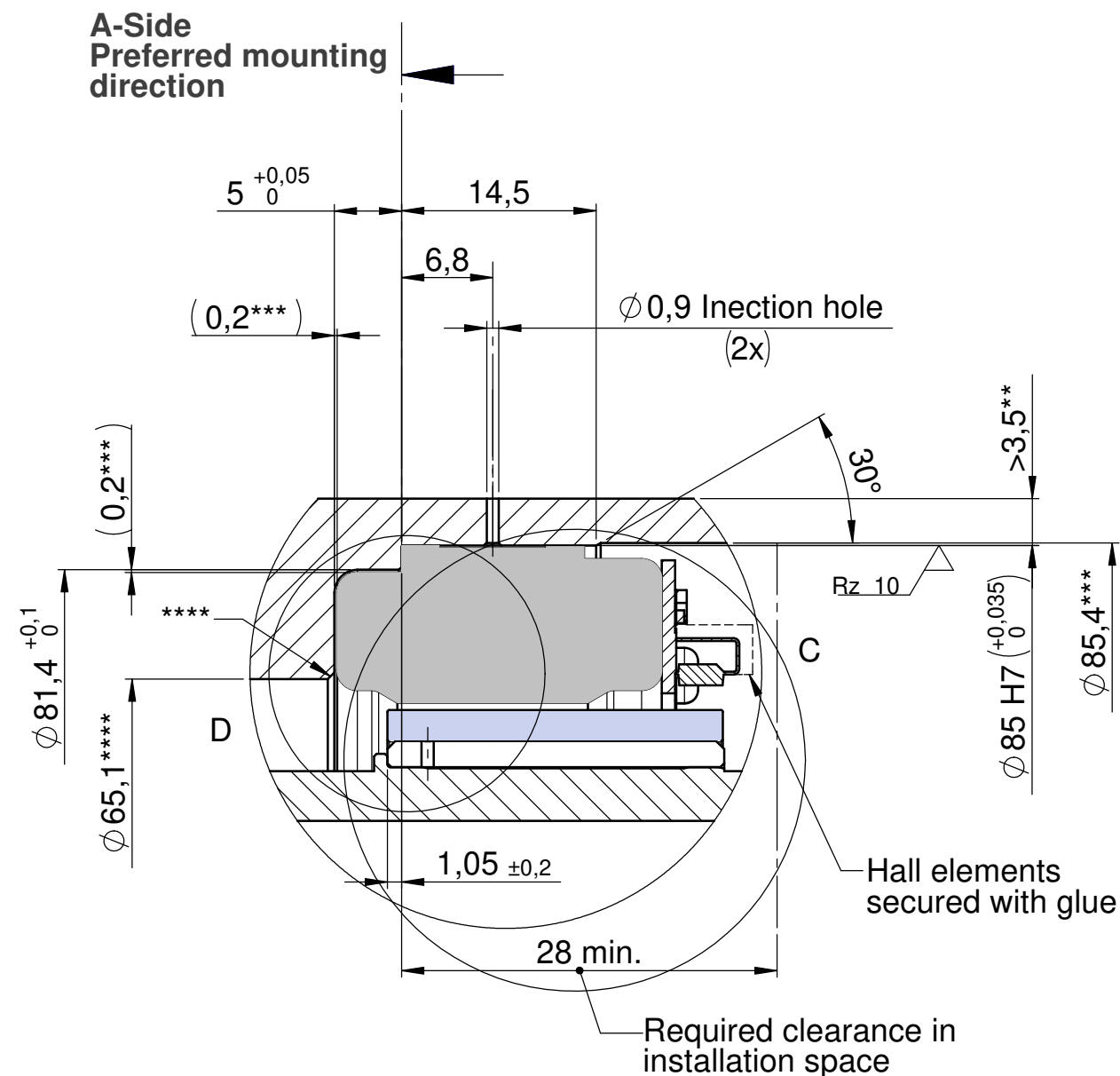
The reproduction, distribution and utilization of this document as well as the communication of its contents to others without express authorization is prohibited. Offenders will be held liable for the payment of damages. All rights reserved in the event of the grant of a patent, utility model or design.



DETAIL C
Scale 3 : 1



DETAIL B
Scale 2 : 1





- * Recommended slip bevel
- ** Recommended wall thickness
- *** Suggested dimension for air and creeping distances (<50V) UL and NRTL certification
- **** Proposal to simplify cleaning after gluing

Rz 16 (✓)

DIN ISO 13715

Compliant to EU-RoHS and EU-REACH, latest edition.

ECR Number		ECR Name			ECR Description			Engineering code E-00107665.01	
		Date		Name		Material			
		Prepared		Checked		Part name			
		Approved		Schwelle		ILM85x13 Einbau Stator PCB-HD / PCB-HD-T - Rotor			
 units in mm		ISO 8015 DIN ISO 2768 f H		Confidentially level		Number		Rev. Ind. Sheet	
Mass	Volume	Scale 1:1		Format A3		317931.0100		4/4	