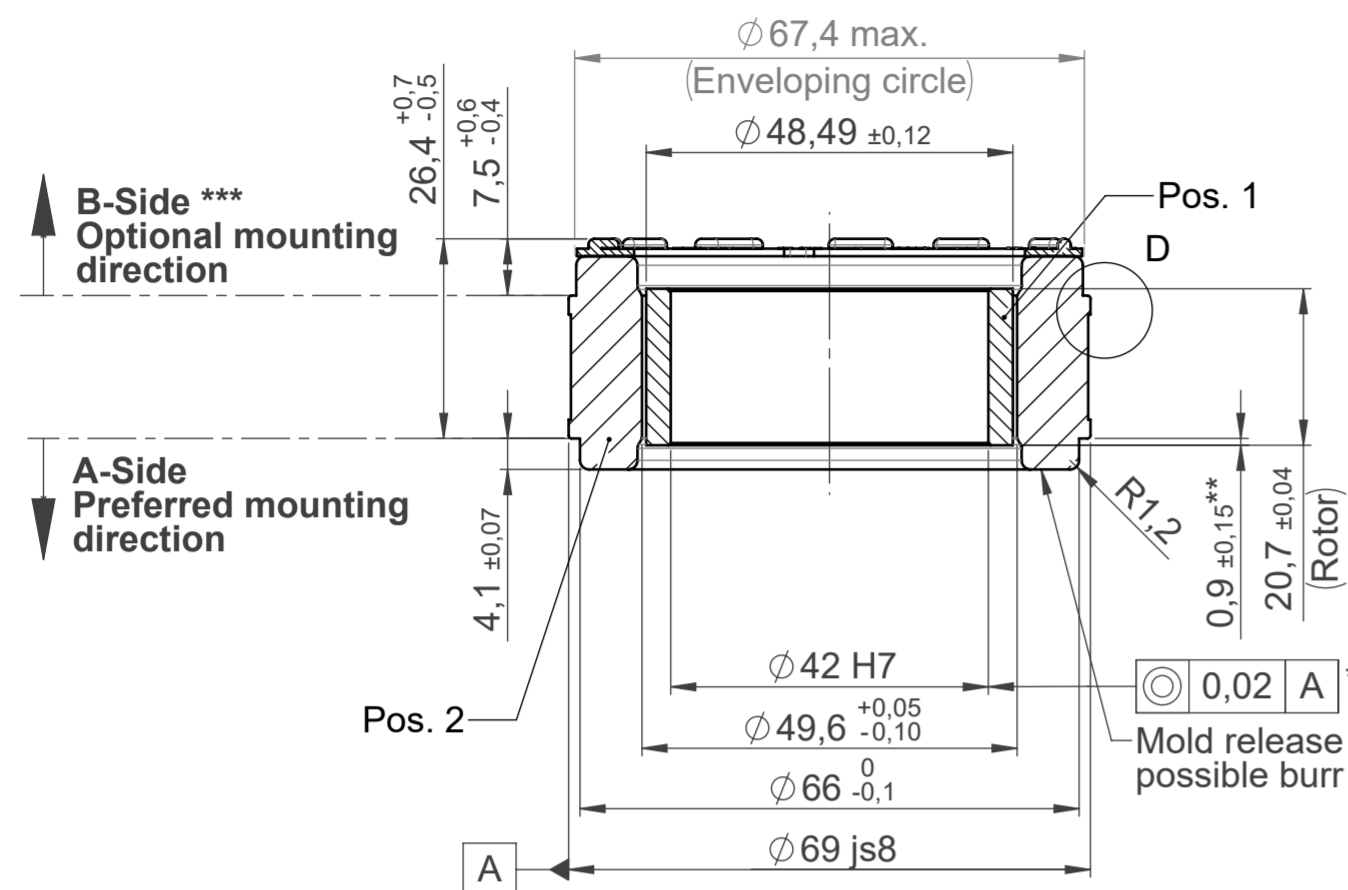
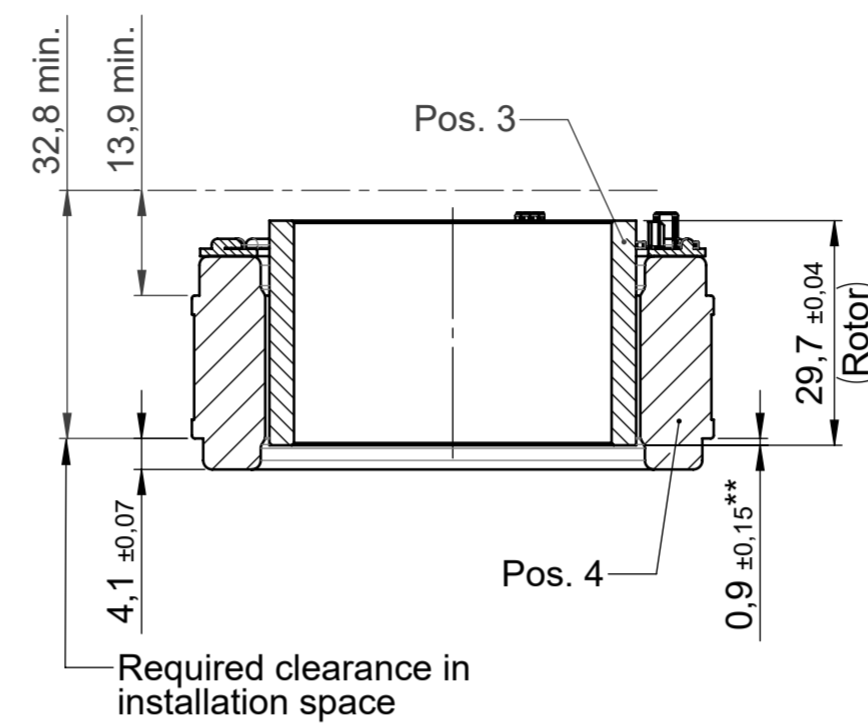


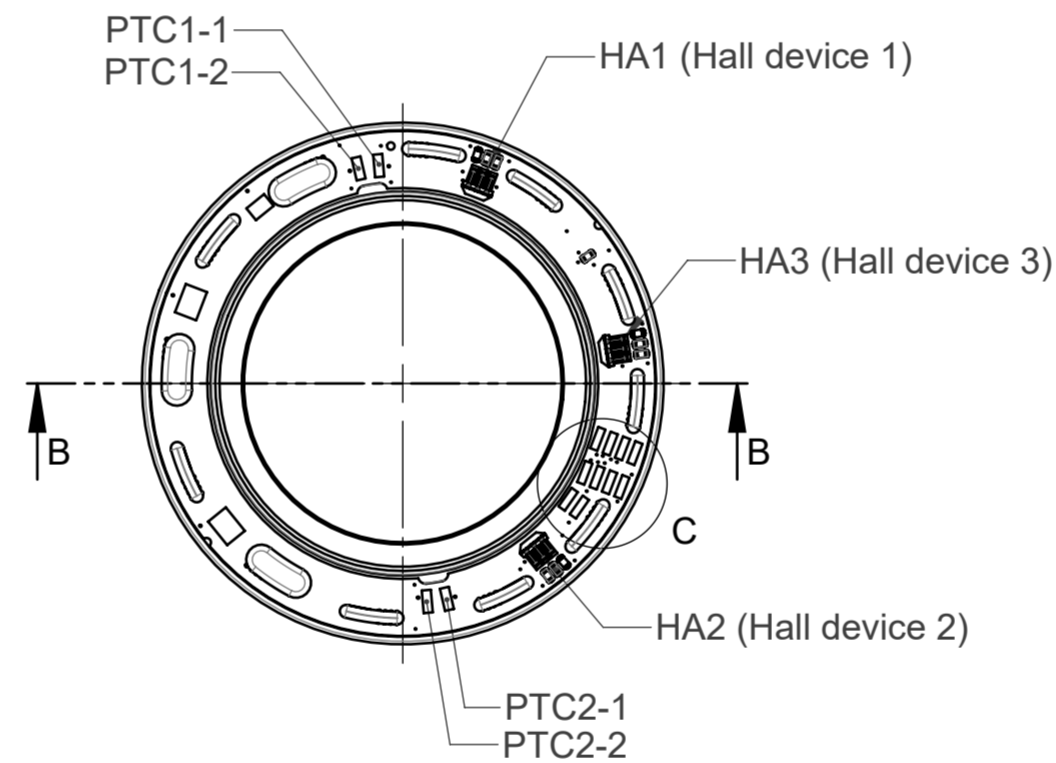
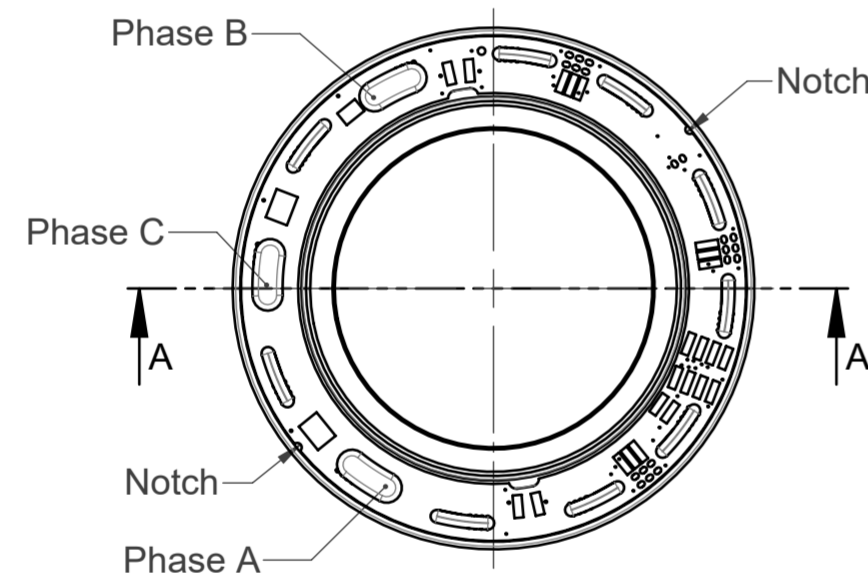
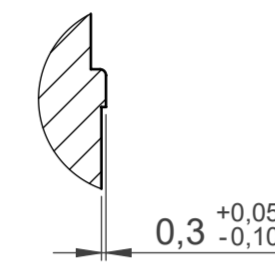
**ILM70x18 SERVO KIT PCB**  
**ILM70x18 SERVO KIT PCB-T**  
 Section A-A



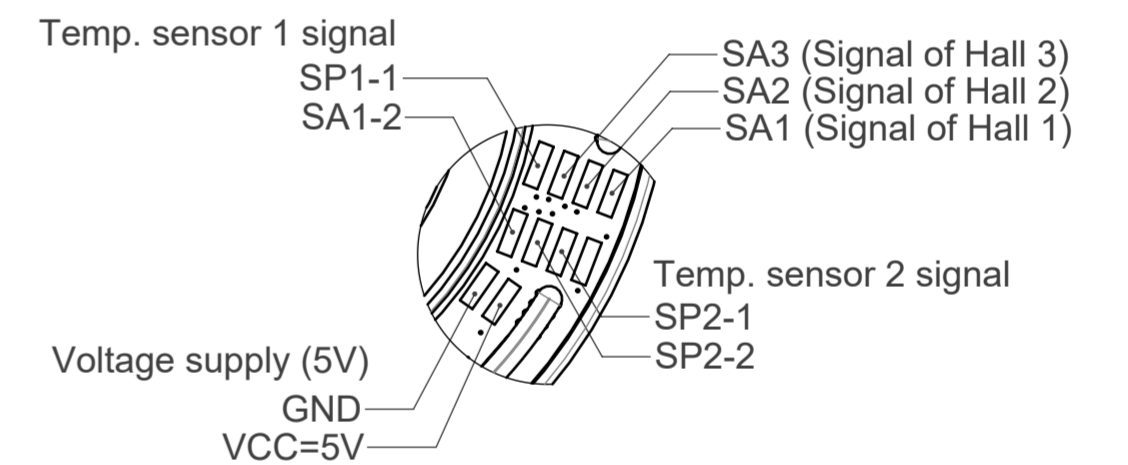
**ILM70x18 SERVO KIT PCB-HD**  
**ILM70x18 SERVO KIT PCB-HD-T**  
 Section B-B



DETAIL D  
Scale 2 : 1



DETAIL C  
Scale 2:1




For further technical information please refer to the datasheet  
 DRVA\_DB-ILM-Kits\_ILM70x18\_Rev200

- \* In assembly
- \*\* Rotor position in relation to stator mounting edge
- \*\*\* B-Side mounting requires additional TQ design support

Housing and shaft design according to installation dimensions of motor housing and motor shaft.

Compliant to EU-RoHS and EU-REACH, latest edition.

ECR Number		ECR Name MeindIA		ECR Description ILM70x18 Rotor HD eingebaut		Engineering code E-00107635.01	
 ISO 8015 DIN ISO 2768 f H units in mm	Prepared	27.07.2016	Name	MeindIA			
	Checked	16.11.2021	Name	Stamp/IM			
	Approved	22.11.2021	Name	Schwelle			
Mass	Volume	Scale 1:1		Format A2		Part name ILM70x18 SERVO KIT PCB Info	
		Confidentiality level		Number		Rev.	Ind. Sheet
				317928.0101			1/4

**ILM70x18 SERVO KIT PCB (Interconnection Type)**

Identification	Position 1			Position 2		
	Order number	Order name	Amount	Order number	Order name	Amount
ILM70x18 SERVO KIT STD VSS	286838.0101	ILM70x18 Rotor	1	312684.0100	ILM70x18 Stator STD VSS	1
ILM70x18 SERVO KIT STD VSP	286838.0101	ILM70x18 Rotor	1	312386.0100	ILM70x18 Stator STD VSP	1
ILM70x18 SERVO KIT STD VDS	286838.0101	ILM70x18 Rotor	1	312446.0100	ILM70x18 Stator STD VDS	1
ILM70x18 SERVO KIT STD VDP	286838.0101	ILM70x18 Rotor	1	315358.0100	ILM70x18 Stator STD VDP	1
ILM70x18 SERVO KIT HS VSS	286838.0101	ILM70x18 Rotor	1	315319.0100	ILM70x18 Stator HS VSS	1
ILM70x18 SERVO KIT HS VSP	286838.0101	ILM70x18 Rotor	1	315322.0100	ILM70x18 Stator HS VSP	1
ILM70x18 SERVO KIT HS VDS	286838.0101	ILM70x18 Rotor	1	315332.0100	ILM70x18 Stator HS VDS	1
ILM70x18 SERVO KIT HS VDP	286838.0101	ILM70x18 Rotor	1	315348.0100	ILM70x18 Stator HS VDP	1

**ILM70x18 SERVO KIT PCB-T (Option: Temperature sensor)**

Identification	Position 1			Position 2		
	Order number	Order name	Amount	Order number	Order name	Amount
ILM70x18 SERVO KIT STD VSS-T	286838.0101	ILM70x18 Rotor	1	312187.0100	ILM70x18 Stator STD VSS-T	1
ILM70x18 SERVO KIT STD VSP-T	286838.0101	ILM70x18 Rotor	1	311855.0100	ILM70x18 Stator STD VSP-T	1
ILM70x18 SERVO KIT STD VDS-T	286838.0101	ILM70x18 Rotor	1	315361.0100	ILM70x18 Stator STD VDS-T	1
ILM70x18 SERVO KIT STD VDP-T	286838.0101	ILM70x18 Rotor	1	315362.0100	ILM70x18 Stator STD VDP-T	1
ILM70x18 SERVO KIT HS VSS-T	286838.0101	ILM70x18 Rotor	1	315370.0100	ILM70x18 Stator HS VSS-T	1
ILM70x18 SERVO KIT HS VSP-T	286838.0101	ILM70x18 Rotor	1	315371.0100	ILM70x18 Stator HS VSP-T	1
ILM70x18 SERVO KIT HS VDS-T	286838.0101	ILM70x18 Rotor	1	315372.0100	ILM70x18 Stator HS VDS-T	1
ILM70x18 SERVO KIT HS VDP-T	286838.0101	ILM70x18 Rotor	1	315373.0100	ILM70x18 Stator HS VDP-T	1

**ILM70x18 SERVO KIT PCB-HD (Option: Hall Digital commutation)**

Identification	Position 3			Position 4		
	Order number	Order name	Amount	Order number	Order name	Amount
ILM70x18 SERVO KIT STD VSS-HD	326279.0100	ILM70x18 Rotor HD	1	313893.0100	ILM70x18 Stator STD VSS-HD	1
ILM70x18 SERVO KIT STD VSP-HD	326279.0100	ILM70x18 Rotor HD	1	315354.0100	ILM70x18 Stator STD VSP-HD	1
ILM70x18 SERVO KIT STD VDS-HD	326279.0100	ILM70x18 Rotor HD	1	315356.0100	ILM70x18 Stator STD VDS-HD	1
ILM70x18 SERVO KIT STD VDP-HD	326279.0100	ILM70x18 Rotor HD	1	315359.0100	ILM70x18 Stator STD VDP-HD	1
ILM70x18 SERVO KIT HS VSS-HD	326279.0100	ILM70x18 Rotor HD	1	315320.0100	ILM70x18 Stator HS VSS-HD	1
ILM70x18 SERVO KIT HS VSP-HD	326279.0100	ILM70x18 Rotor HD	1	315323.0100	ILM70x18 Stator HS VSP-HD	1
ILM70x18 SERVO KIT HS VDS-HD	326279.0100	ILM70x18 Rotor HD	1	315344.0100	ILM70x18 Stator HS VDS-HD	1
ILM70x18 SERVO KIT HS VDP-HD	326279.0100	ILM70x18 Rotor HD	1	315349.0100	ILM70x18 Stator HS VDP-HD	1

**ILM70x18 SERVO KIT PCB-HD-T (Option: Hall Digital commutation + Temperature sensor)**

Identification	Position 3			Position 4		
	Order number	Order name	Amount	Order number	Order name	Amount
ILM70x18 SERVO KIT STD VSS-HD-T	326279.0100	ILM70x18 Rotor HD	1	313602.0100	ILM70x18 Stator STD VSS-HD-T	1
ILM70x18 SERVO KIT STD VSP-HD-T	326279.0100	ILM70x18 Rotor HD	1	315364.0100	ILM70x18 Stator STD VSP-HD-T	1
ILM70x18 SERVO KIT STD VDS-HD-T	326279.0100	ILM70x18 Rotor HD	1	315365.0100	ILM70x18 Stator STD VDS-HD-T	1
ILM70x18 SERVO KIT STD VDP-HD-T	326279.0100	ILM70x18 Rotor HD	1	315369.0100	ILM70x18 Stator STD VDP-HD-T	1
ILM70x18 SERVO KIT HS VSS-HD-T	326279.0100	ILM70x18 Rotor HD	1	315350.0100	ILM70x18 Stator HS VSS-HD-T	1
ILM70x18 SERVO KIT HS VSP-HD-T	326279.0100	ILM70x18 Rotor HD	1	315351.0100	ILM70x18 Stator HS VSP-HD-T	1
ILM70x18 SERVO KIT HS VDS-HD-T	326279.0100	ILM70x18 Rotor HD	1	315352.0100	ILM70x18 Stator HS VDS-HD-T	1
ILM70x18 SERVO KIT HS VDP-HD-T	326279.0100	ILM70x18 Rotor HD	1	315353.0100	ILM70x18 Stator HS VDP-HD-T	1

Product configuration code:

ILM70x18 SERVO KIT XXX YYY - HD - T

Lamination grade:

STD Standard  
HS High Speed

Interconnection:

VSS Star-Serial  
VSP Star-Parallel  
VDS Delta-Serial  
VDP Delta-Parallel



Feedback:

HD Hall Digital

Configuration:

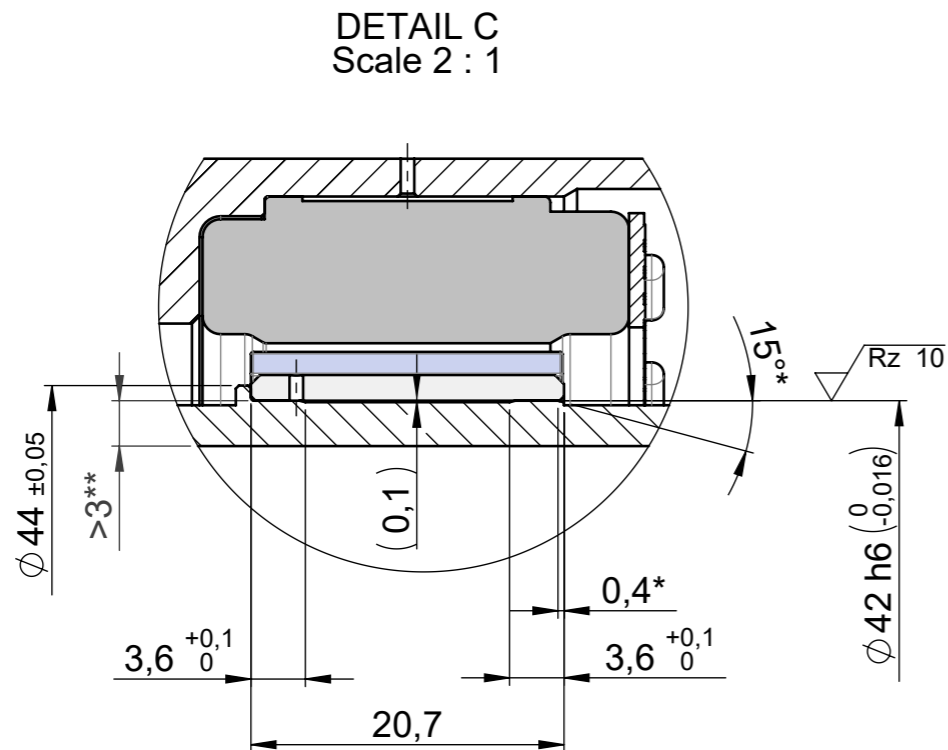
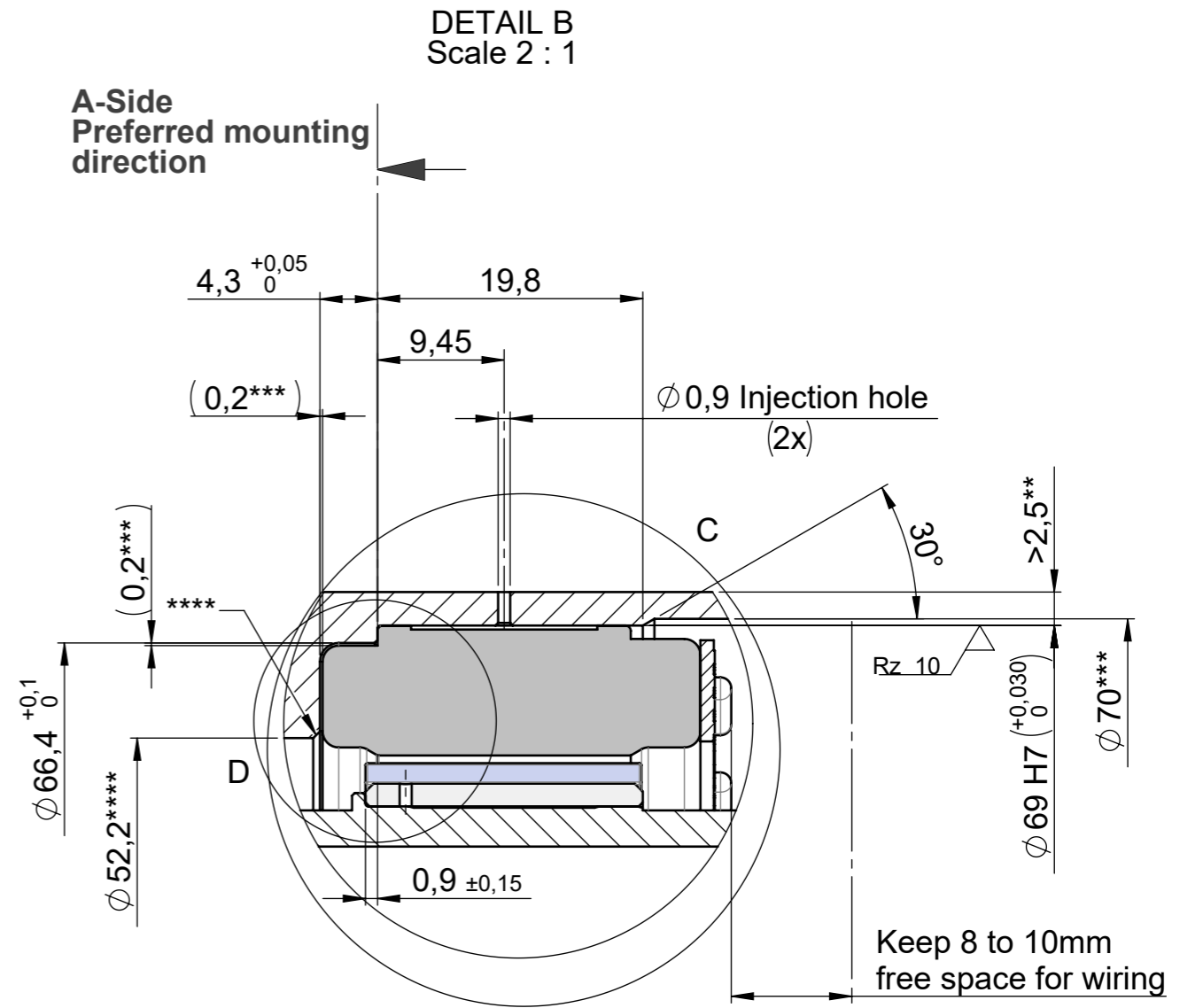
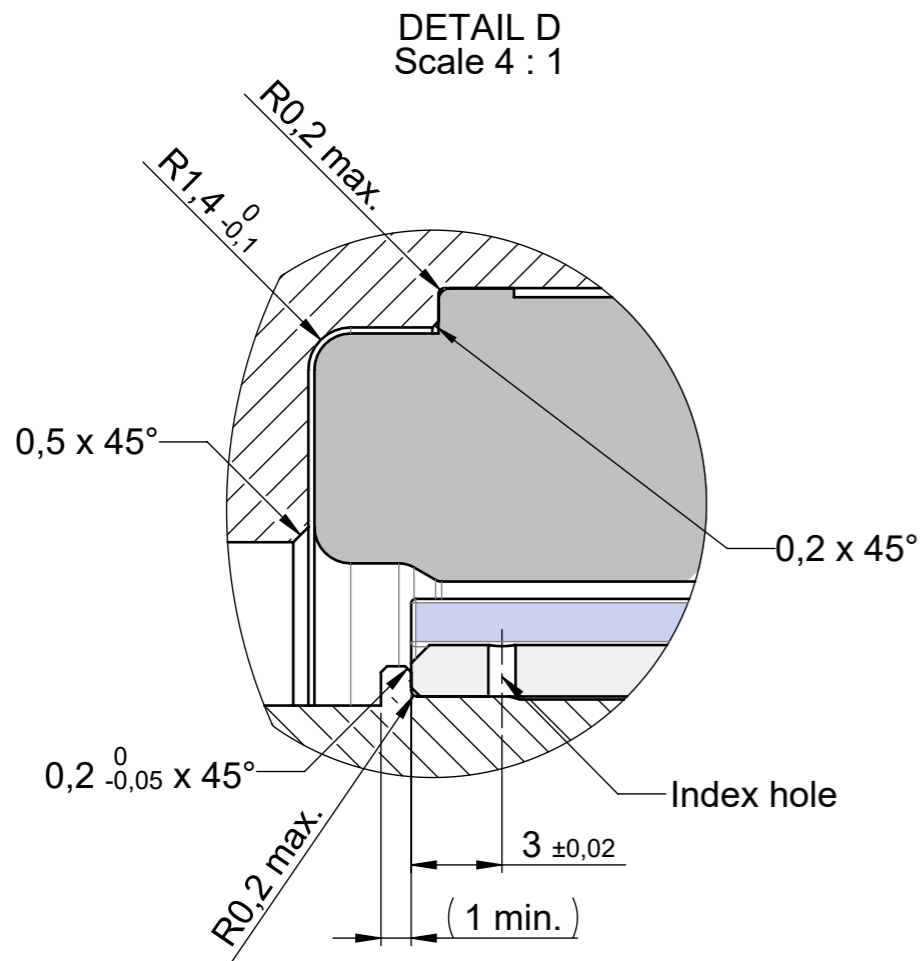
T Temperature sensor

Compliant to EU-RoHS and EU-REACH, latest edition.

ECR Number		ECR Name		ECR Description		Engineering code		
		MeindIA		ILM70x18 Rotor HD eingebaut		E-00107635.01		
		Date	Name	Material				
		Prepared	27.07.2016	MeindIA				
		Checked	16.11.2021	StampfM	Part name			
 units in mm		Approved	22.11.2021	Schwelle	ILM70x18 SERVO KIT PCB			
		Confidentially level				Number		Rev.
Mass	Volume	Scale	1:1	Format	A3	317928.0101		
						2/4		

The reproduction, distribution and utilization of this document as well as the communication of its contents to others without express authorization is prohibited. Offenders will be held liable for the payment of damages. All rights reserved in the event of the grant of a patent, utility model or design.

The reproduction, distribution and utilization of this document as well as the communication of its contents to others without express authorization is prohibited. Offenders will be held liable for the payment of damages. All rights reserved in the event of a patent, utility model or design.





- \* Recommended slip level
- \*\* Recommended wall thickness
- \*\*\* Suggested dimension for air and creeping distances (<50V) UL and NRTL certification
- \*\*\*\* Proposal to simplify cleaning after gluing

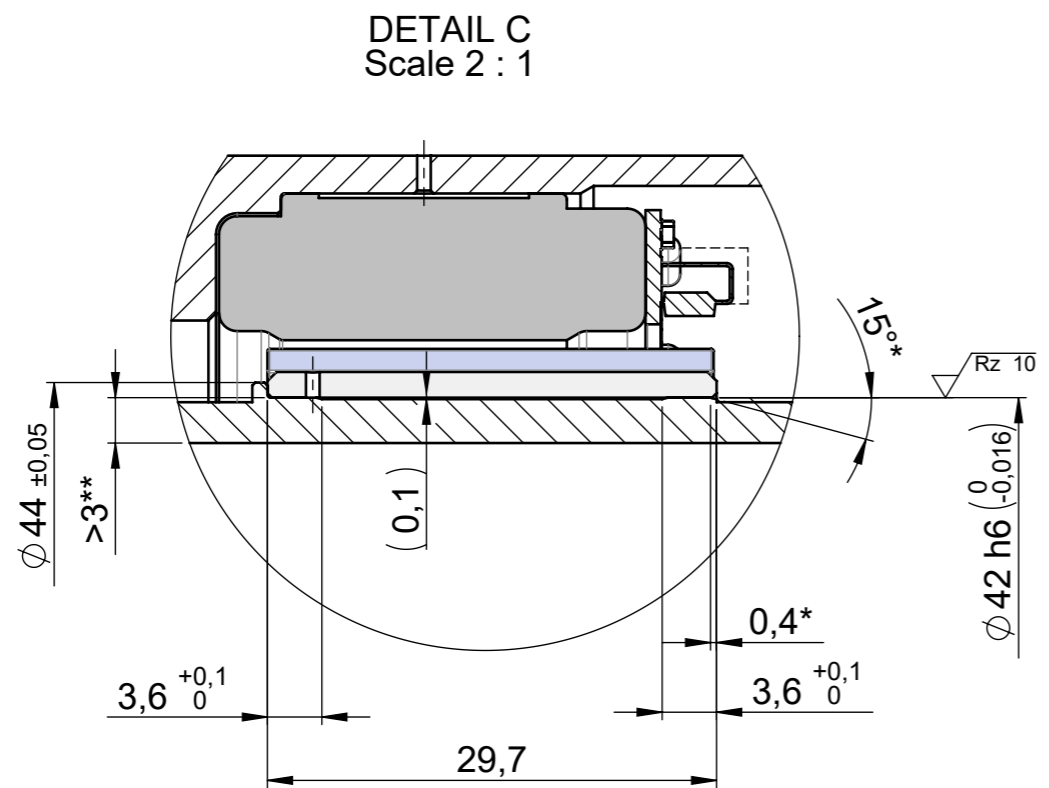
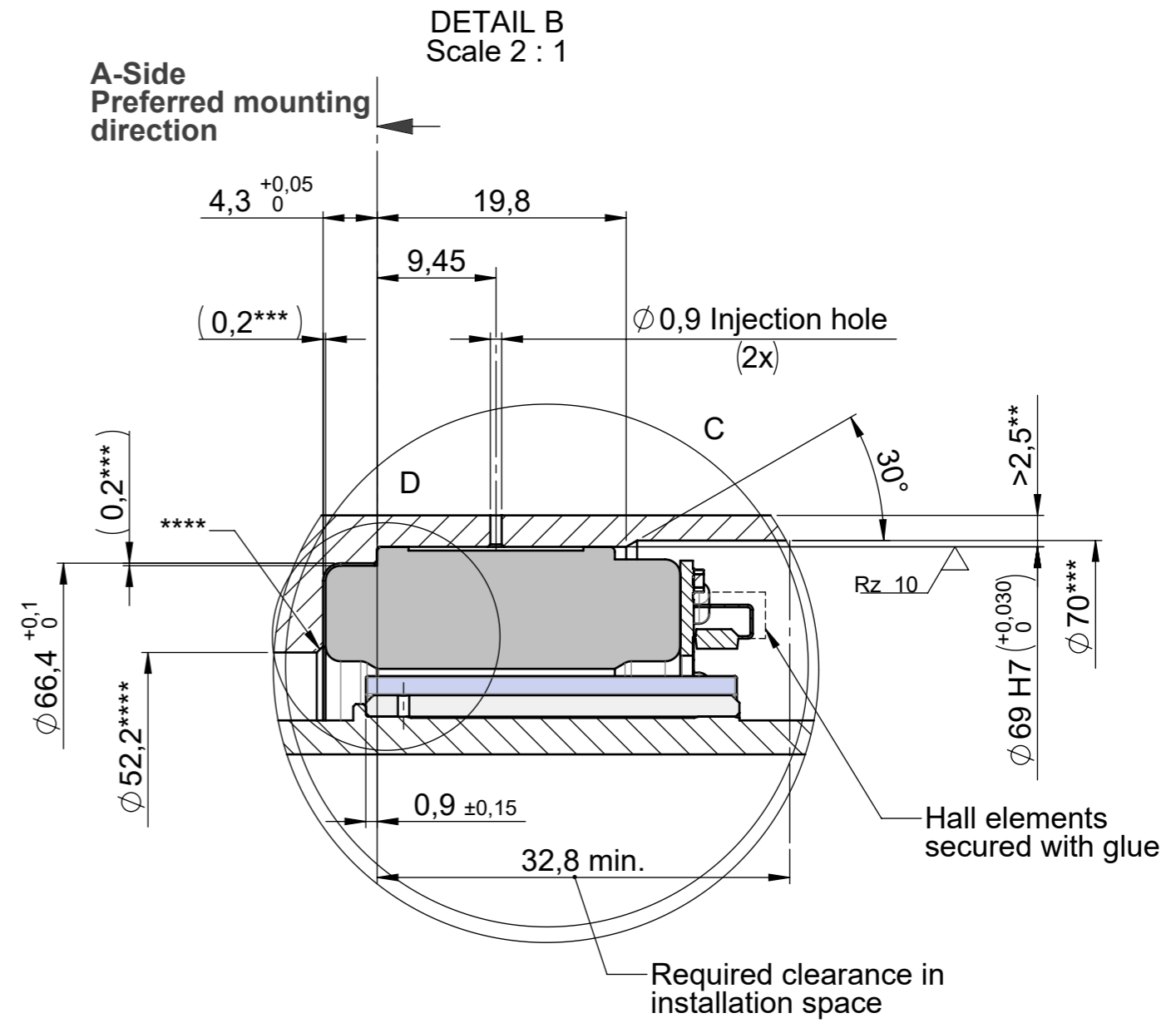
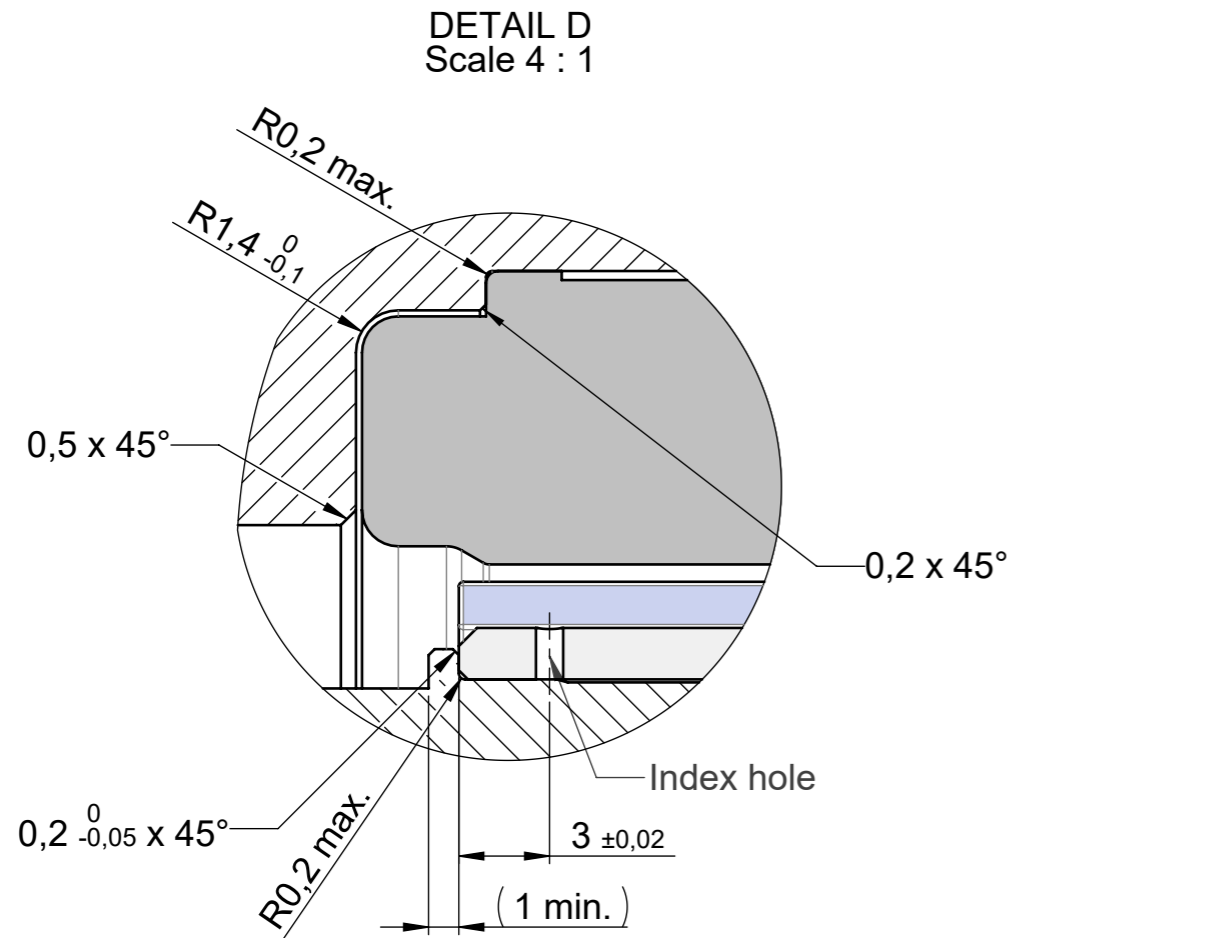
Rz 16 (✓)

DIN ISO 13715

Compliant to EU-RoHS and EU-REACH, latest edition.

ECR Number		ECR Name MeindIA		ECR Description ILM70x18 Rotor HD eingebaut		Engineering code E-00107635.01		
		Date	Name	Material				
		Prepared	27.07.2016	MeindIA				
		Checked	16.11.2021	StampfIM	Part name ILM70x18 Einbau Stator PCB / PCB-T - Rotor			
 units in mm		ISO 8015 DIN ISO 2768 f H		Confidentially level		Number 317928.0101		
Mass	Volume	Scale 1:1		Format A3		Rev. Ind. Sheet 3/4		

The reproduction, distribution and utilization of this document as well as the communication of its contents to others without express authorization is prohibited. Offenders will be held liable for the payment of damages. All rights reserved in the event of a patent, utility model or design.



- \* Recommended slip bevel
- \*\* Recommended wall thickness
- \*\*\* Suggested dimension for air and creeping distances (<50V) UL and NRTL certification
- \*\*\*\* Proposal to simplify cleaning after gluing

DIN ISO 13715

Rz 16 (✓)

Compliant to EU-RoHS and EU-REACH, latest edition.

ECR Number		ECR Name MeindIA		ECR Description ILM70x18 Rotor HD eingebaut		Engineering code E-00107635.01	
	Prepared	27.07.2016	Name	Material			
	Checked	16.11.2021	Stamp/IM	Part name ILM70x18 Einbau Stator PCB-HD / PCB-HD-T - Rotor			
	Approved	22.11.2021	Schwelle				
ISO 8015 DIN ISO 2768 f H		Confidentially level		Number		Rev.	
Mass	Volume	Scale	1:1	Format	A3	317928.0101	
						Ind. Sheet 4/4	