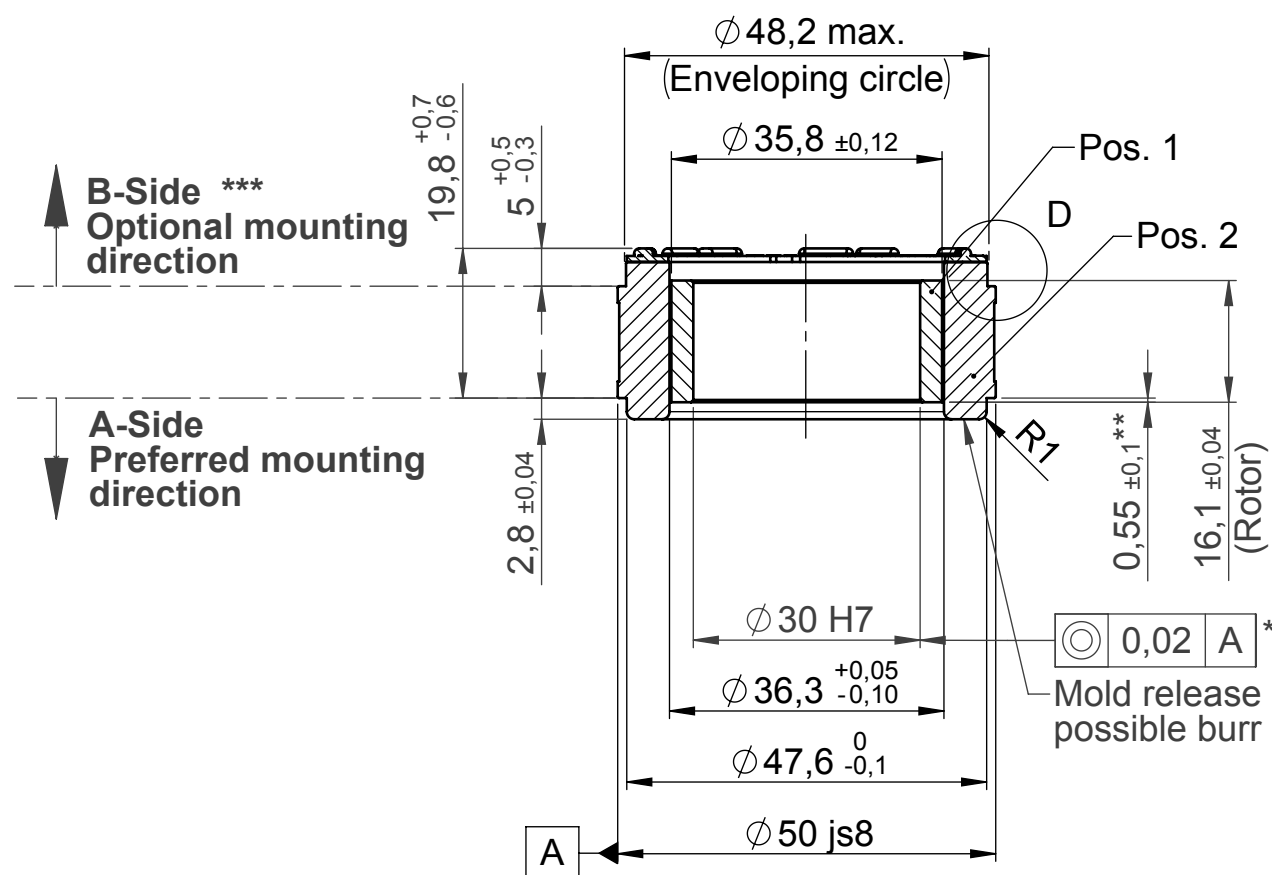


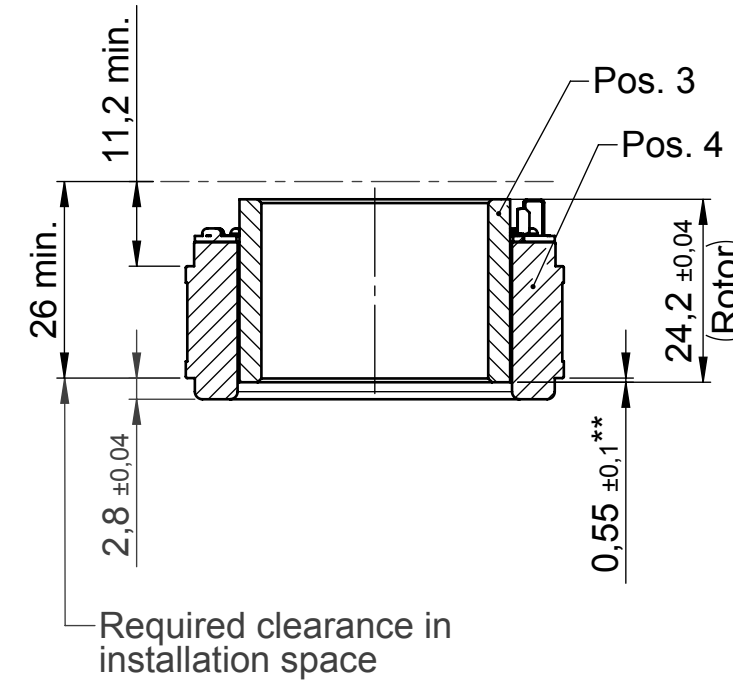
ILM50x14 SERVO KIT PCB  
ILM50x14 SERVO KIT PCB-T

ILM50x14 SERVO KIT PCB-HD  
ILM50x14 SERVO KIT PCB-HD-T

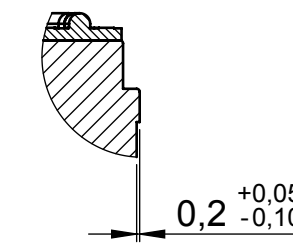
Section A-A



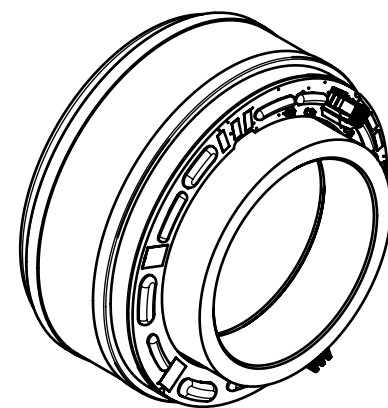
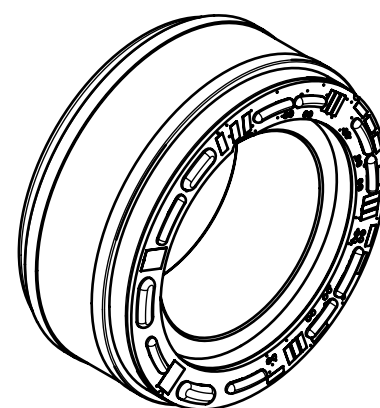
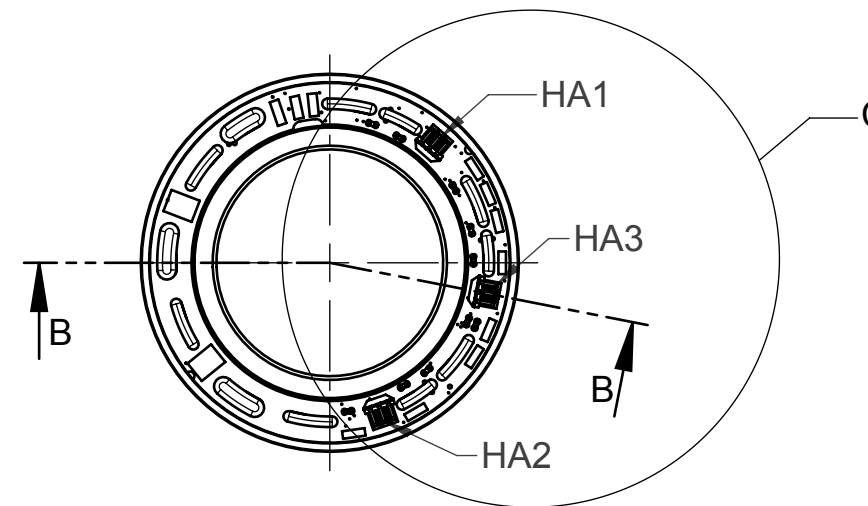
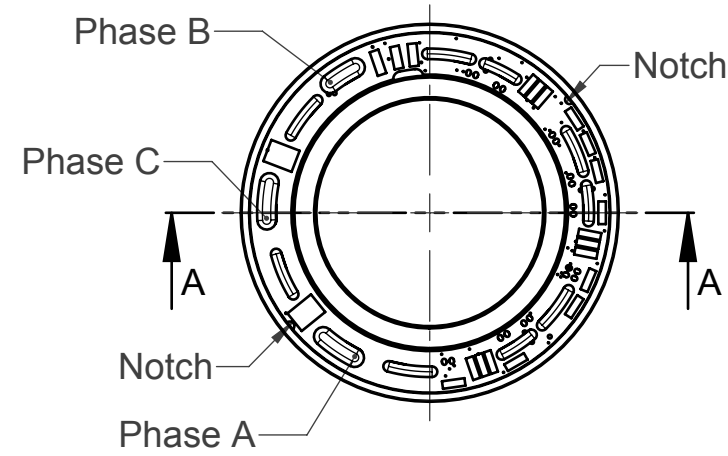
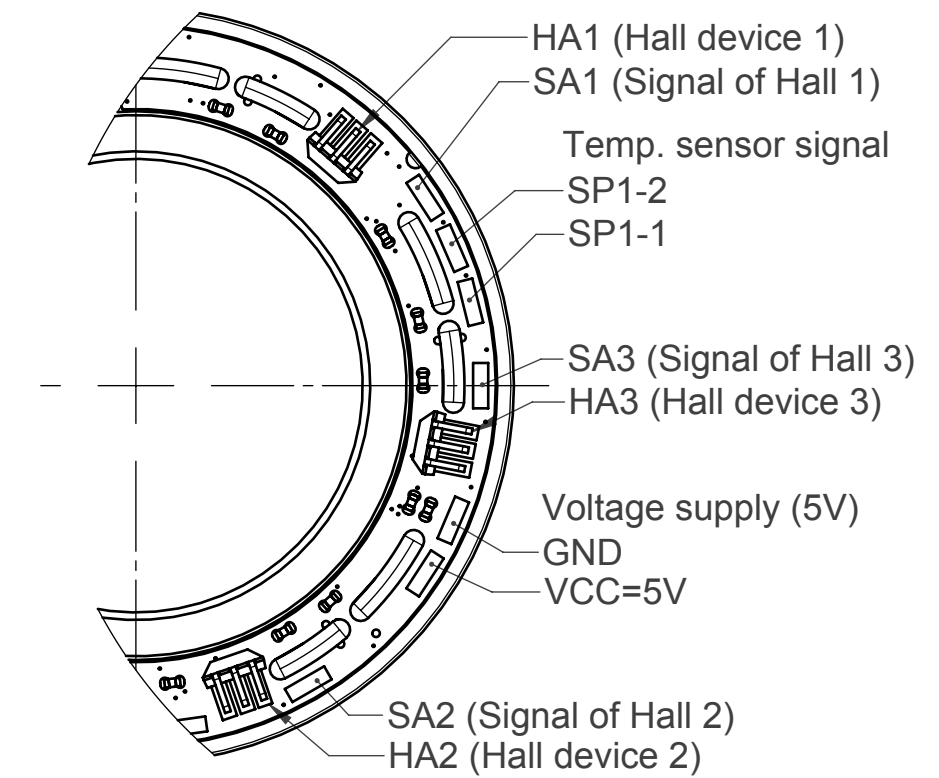
Section B-B



DETAIL D  
Scale 2 : 1



DETAIL C  
Scale 2 : 1



For further technical information please refer to the datasheet  
DRVA\_DB-ILM-Kits\_ILM50x14\_Rev200



\* In assembly

\*\* Rotor position in relation to stator mounting edge

\*\*\* B-Side mounting requires additional TQ design support

Housing and shaft design according to installation dimensions of  
motor housing and motor shaft.

Compliant to EU-RoHS and EU-REACH, latest edition.

ECR Number		ECR Name MeindIA		ECR Description		Engineering code E-00116973.02		
		Date	Name	Material				
		Prepared	08.02.2019	MeindIA				
		Checked	13.09.2019	Loos	Part name ILM50x14 SERVO KIT PCB Info			
		Approved	13.09.2019	Schwelle	Confidentiality level		Number	
Mass	Volume	Scale 1:1		Format A2	Ind. Sheet		Rev.	
				312569.0101		1/4		

The reproduction, distribution and utilization of this document as well as the communication of its contents to others without express authorization is prohibited. Offenders will be held liable for the payment of damages. All rights reserved in the event of a patent, utility model or design.

**ILM50x14 SERVO KIT PCB (Interconnection Type)**

Identification	Position 1			Position 2		
	Order number	Order name	Amount	Order number	Order name	Amount
ILM50x14 SERVO KIT STD VSS	286834.0101	ILM50x14 Rotor	1	301995.0100	ILM50x14 Stator STD VSS	1
ILM50x14 SERVO KIT STD VSP	286834.0101	ILM50x14 Rotor	1	312105.0100	ILM50x14 Stator STD VSP	1
ILM50x14 SERVO KIT STD VDS	286834.0101	ILM50x14 Rotor	1	312106.0100	ILM50x14 Stator STD VDS	1
ILM50x14 SERVO KIT STD VDP	286834.0101	ILM50x14 Rotor	1	312152.0100	ILM50x14 Stator STD VDP	1
ILM50x14 SERVO KIT HS VSS	286834.0101	ILM50x14 Rotor	1	312108.0100	ILM50x14 Stator HS VSS	1
ILM50x14 SERVO KIT HS VSP	286834.0101	ILM50x14 Rotor	1	312109.0100	ILM50x14 Stator HS VSP	1
ILM50x14 SERVO KIT HS VDS	286834.0101	ILM50x14 Rotor	1	312110.0100	ILM50x14 Stator HS VDS	1
ILM50x14 SERVO KIT HS VDP	286834.0101	ILM50x14 Rotor	1	312158.0100	ILM50x14 Stator HS VDP	1

**ILM50x14 SERVO KIT PCB-T (Option: Temperature sensor)**

Identification	Position 1			Position 2		
	Order number	Order name	Amount	Order number	Order name	Amount
ILM50x14 SERVO KIT STD VSS-T	286834.0101	ILM50x14 Rotor	1	312111.0100	ILM50x14 Stator STD VSS-T	1
ILM50x14 SERVO KIT STD VSP-T	286834.0101	ILM50x14 Rotor	1	312112.0100	ILM50x14 Stator STD VSP-T	1
ILM50x14 SERVO KIT STD VDS-T	286834.0101	ILM50x14 Rotor	1	312113.0100	ILM50x14 Stator STD VDS-T	1
ILM50x14 SERVO KIT STD VDP-T	286834.0101	ILM50x14 Rotor	1	312154.0100	ILM50x14 Stator STD VDP-T	1
ILM50x14 SERVO KIT HS VSS-T	286834.0101	ILM50x14 Rotor	1	312114.0100	ILM50x14 Stator HS VSS-T	1
ILM50x14 SERVO KIT HS VSP-T	286834.0101	ILM50x14 Rotor	1	312115.0100	ILM50x14 Stator HS VSP-T	1
ILM50x14 SERVO KIT HS VDS-T	286834.0101	ILM50x14 Rotor	1	312116.0100	ILM50x14 Stator HS VDS-T	1
ILM50x14 SERVO KIT HS VDP-T	286834.0101	ILM50x14 Rotor	1	312162.0100	ILM50x14 Stator HS VDP-T	1

**ILM50x14 SERVO KIT PCB-HD (Option: Digital Hall commutation)**

Identification	Position 3			Position 4		
	Order number	Order name	Amount	Order number	Order name	Amount
ILM50x14 SERVO KIT STD VSS-HD	300046.0100	ILM50x14 Rotor HD	1	298645.0100	ILM50x14 Stator STD VSS-HD	1
ILM50x14 SERVO KIT STD VSP-HD	300046.0100	ILM50x14 Rotor HD	1	312124.0100	ILM50x14 Stator STD VSP-HD	1
ILM50x14 SERVO KIT STD VDS-HD	300046.0100	ILM50x14 Rotor HD	1	312125.0100	ILM50x14 Stator STD VDS-HD	1
ILM50x14 SERVO KIT STD VDP-HD	300046.0100	ILM50x14 Rotor HD	1	312155.0100	ILM50x14 Stator STD VDP-HD	1
ILM50x14 SERVO KIT HS VSS-HD	300046.0100	ILM50x14 Rotor HD	1	312179.0100	ILM50x14 Stator HS VSS-HD	1
ILM50x14 SERVO KIT HS VSP-HD	300046.0100	ILM50x14 Rotor HD	1	312181.0100	ILM50x14 Stator HS VSP-HD	1
ILM50x14 SERVO KIT HS VDS-HD	300046.0100	ILM50x14 Rotor HD	1	312183.0100	ILM50x14 Stator HS VDS-HD	1
ILM50x14 SERVO KIT HS VDP-HD	300046.0100	ILM50x14 Rotor HD	1	312159.0100	ILM50x14 Stator HS VDP-HD	1

**ILM50x14 SERVO KIT PCB-HD-T (Option: Digital Hall commutation + Temperature sensor)**

Identification	Position 3			Position 4		
	Order number	Order name	Amount	Order number	Order name	Amount
ILM50x14 SERVO KIT STD VSS-HD-T	300046.0100	ILM50x14 Rotor HD	1	312066.0100	ILM50x14 Stator STD VSS-HD-T	1
ILM50x14 SERVO KIT STD VSP-HD-T	300046.0100	ILM50x14 Rotor HD	1	312137.0100	ILM50x14 Stator STD VSP-HD-T	1
ILM50x14 SERVO KIT STD VDS-HD-T	300046.0100	ILM50x14 Rotor HD	1	312141.0100	ILM50x14 Stator STD VDS-HD-T	1
ILM50x14 SERVO KIT STD VDP-HD-T	300046.0100	ILM50x14 Rotor HD	1	312156.0100	ILM50x14 Stator STD VDP-HD-T	1
ILM50x14 SERVO KIT HS VSS-HD-T	300046.0100	ILM50x14 Rotor HD	1	312144.0100	ILM50x14 Stator HS VSS-HD-T	1
ILM50x14 SERVO KIT HS VSP-HD-T	300046.0100	ILM50x14 Rotor HD	1	312090.0100	ILM50x14 Stator HS VSP-HD-T	1
ILM50x14 SERVO KIT HS VDS-HD-T	300046.0100	ILM50x14 Rotor HD	1	312145.0100	ILM50x14 Stator HS VDS-HD-T	1
ILM50x14 SERVO KIT HS VDP-HD-T	300046.0100	ILM50x14 Rotor HD	1	312161.0100	ILM50x14 Stator HS VDP-HD-T	1

Product configuration code:

ILM50x14 SERVO KIT XXX YYY - HD - T

Lamination grade:

STD Standard  
HS High Speed

Interconnection:

VSS Star-Serial  
VSP Star-Parallel  
VDS Delta-Serial  
VDP Delta-Parallel



Feedback:

HD Hall Digital

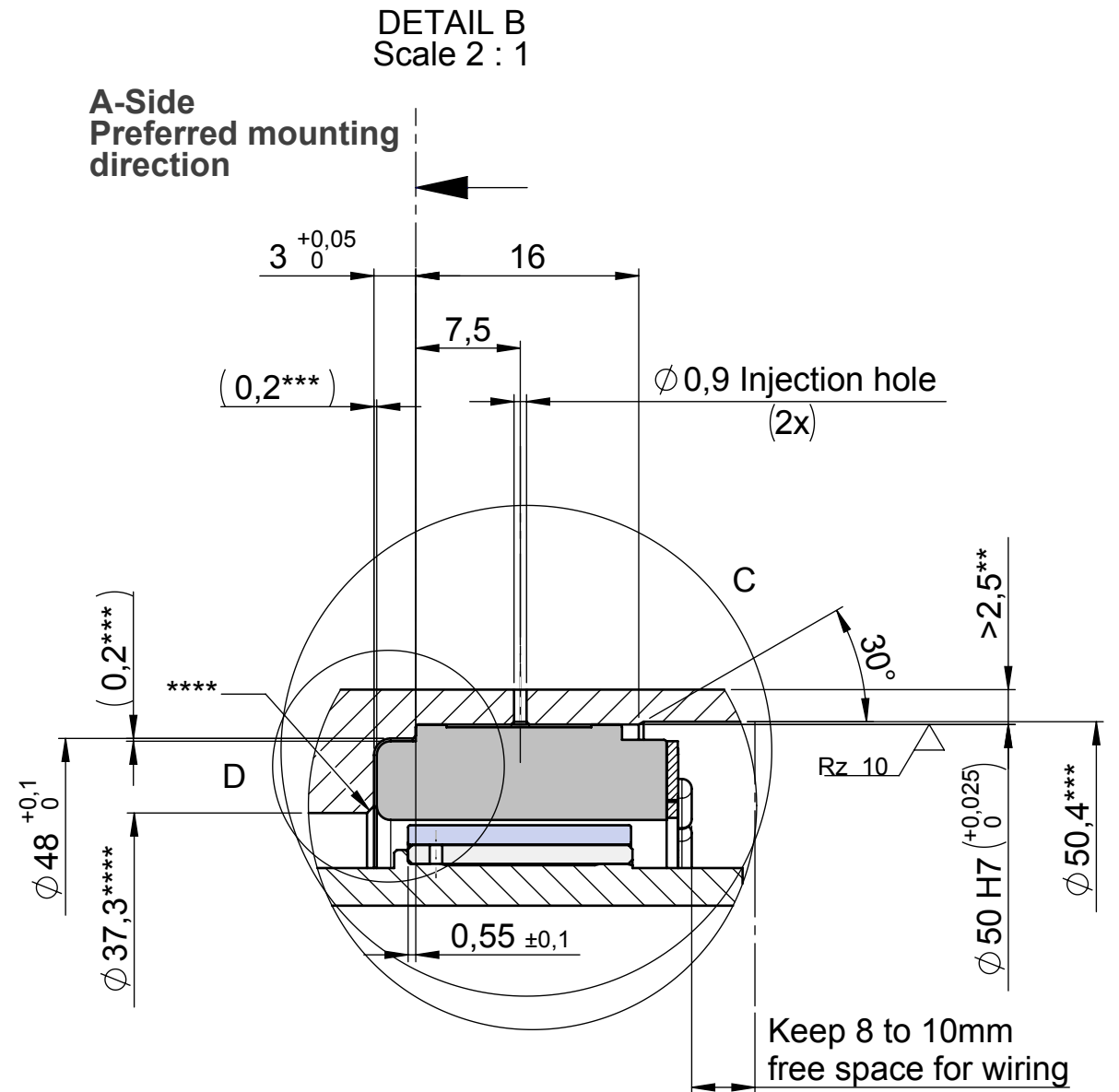
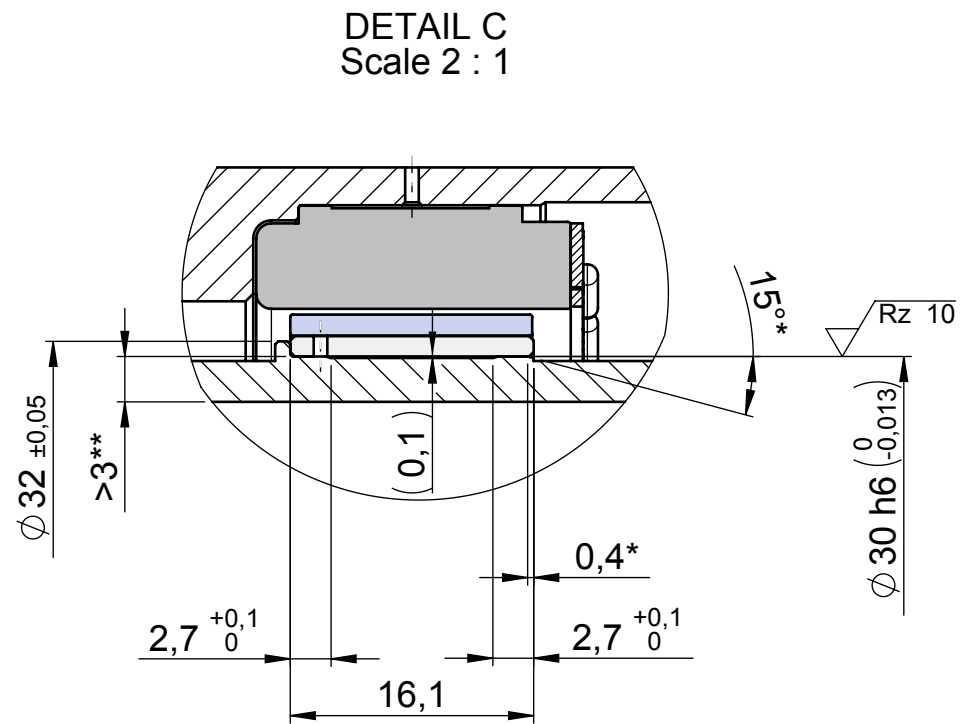
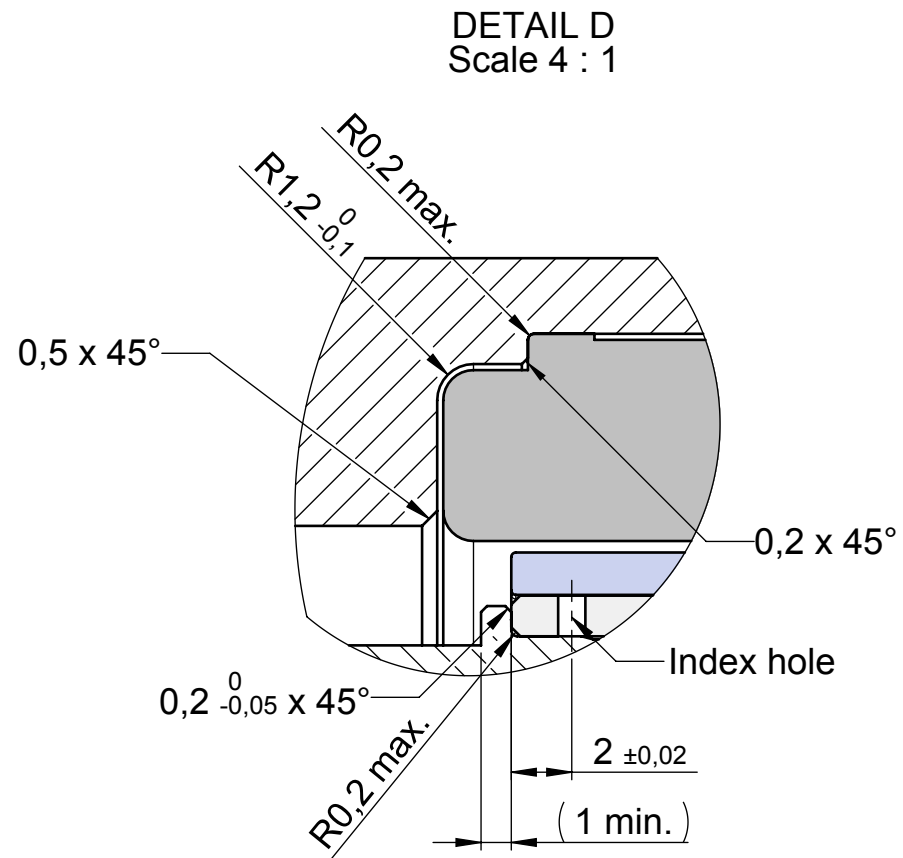
Configuration:

T Temperature sensor

Compliant to EU-RoHS and EU-REACH, latest edition.

ECR Number		ECR Name MeindIA		ECR Description		Engineering code E-00116973.02	
		Prepared		Date		Material	
		Checked		13.09.2019		MeindIA	
		Approved		13.09.2019		Loos	
 units in mm		ISO 8015		Confidentially level		Part name ILM50x14 SERVO KIT PCB Info	
Mass		Volume		Scale 1:1		Number 312569.0101	
				Format A3		Rev. Ind. Sheet 2/4	

The reproduction, distribution and utilization of this document as well as the communication of its contents to others without express authorization is prohibited. Offenders will be held liable for the payment of damages. All rights reserved in the event of the grant of a patent, utility model or design.





- \* Recommended slip bevel
- \*\* Recommended wall thickness
- \*\*\* Suggested dimension for air and creeping distances (<50V) UL and NRTL certification
- \*\*\*\* Proposal to simplify cleaning after gluing

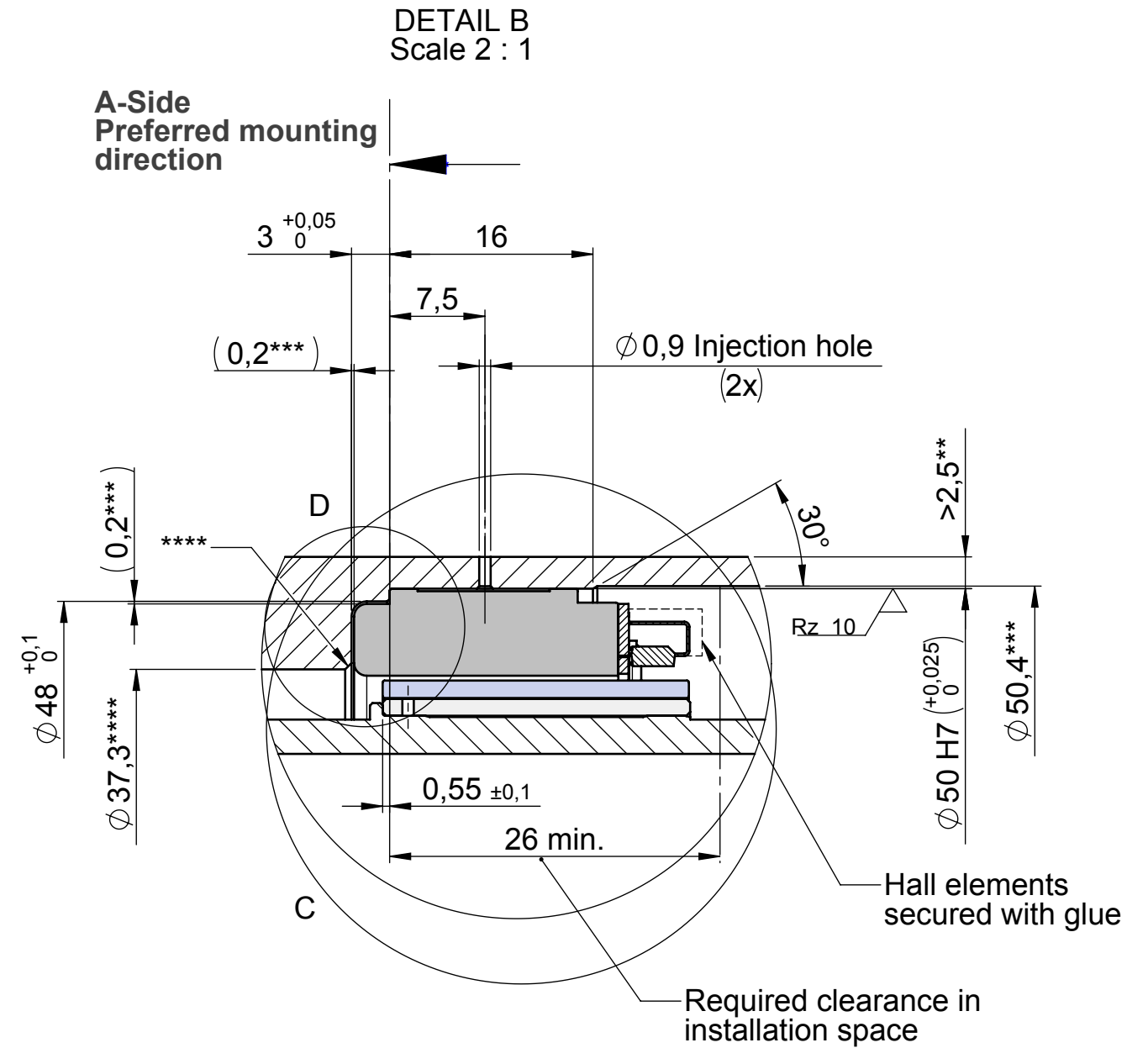
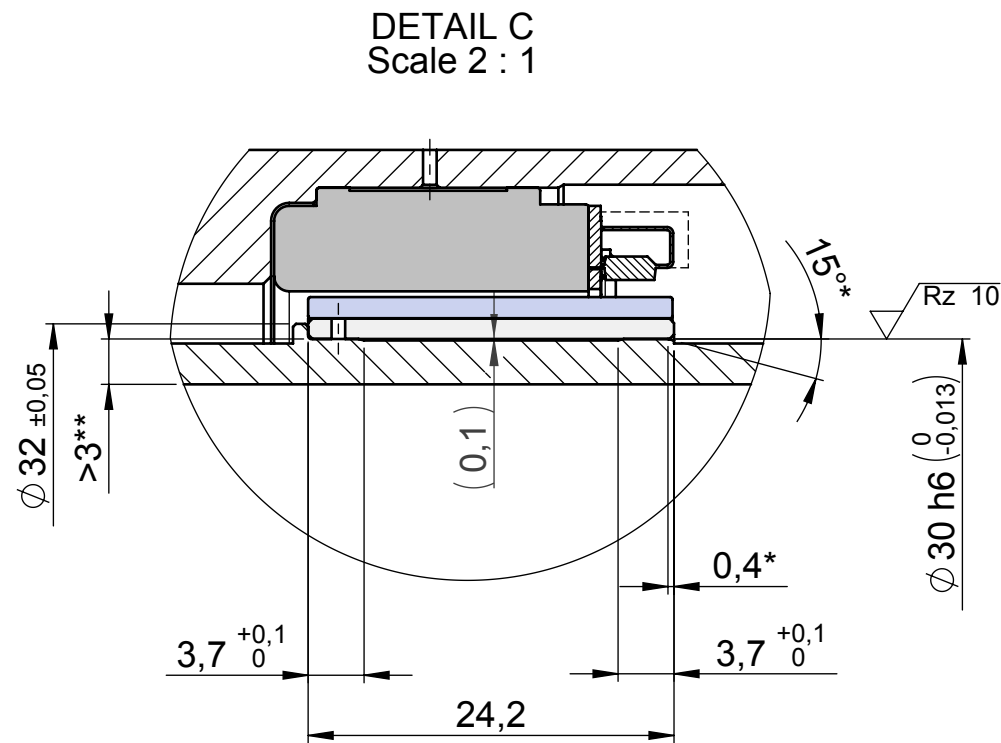
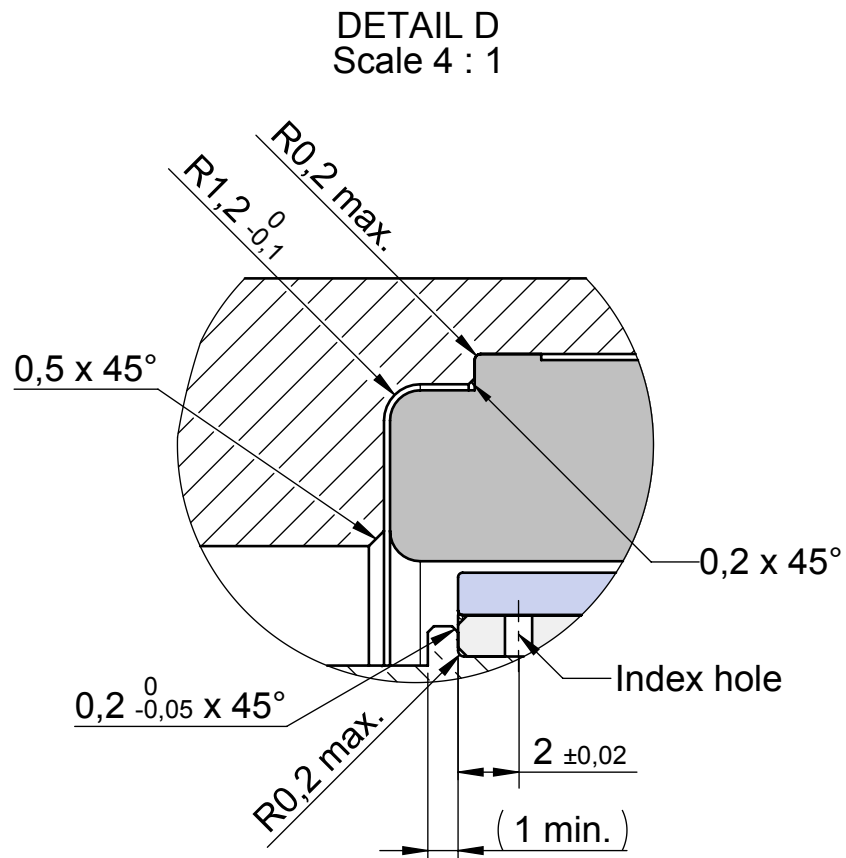
DIN ISO 13715  $\begin{matrix} -0,3 \\ -0,1 \end{matrix}$   $\begin{matrix} +0,3 \\ +0,1 \end{matrix}$

Rz 16 (✓)

Compliant to EU-RoHS and EU-REACH, latest edition.

ECR Number		ECR Name MeindIA		ECR Description		Engineering code E-00116973.02					
		Date		Name		Material					
		Prepared		MeindIA							
		Checked		Loos							
 units in mm		Approved		Schwelle		Part name ILM50x14 Einbau Stator PCB / PCB-T - Rotor					
		Confidentially level				Number		Rev.	Ind. Sheet		
Mass	Volume	Scale		1:1		Format		A3	312569.0101		3/4

The reproduction, distribution and utilization of this document as well as the communication of its contents to others without express authorization is prohibited. Offenders will be held liable for the payment of damages. All rights reserved in the event of the grant of a patent, utility model or design.



- \* Recommended slip level
- \*\* Recommended wall thickness
- \*\*\* Suggested dimension for air and creeping distances (<50V) UL and NRTL certification
- \*\*\*\* Proposal to simplify cleaning after gluing

DIN ISO 13715

Rz 16 (✓)

Compliant to EU-RoHS and EU-REACH, latest edition.

ECR Number		ECR Name MeindIA		ECR Description		Engineering code E-00116973.02	
	Prepared	08.02.2019	MeindIA	Material			
	Checked	13.09.2019	Loos	Part name ILM50x14 Einbau Stator PCB-HD / PCB-HD-T - Rotor			
	Approved	13.09.2019	Schwelle	Number   Rev.   Ind. Sheet			
ISO 8015 DIN ISO 2768 f H		Confidentially level		Scale 1:1		Format A3	
Mass	Volume			312569.0101		4/4	