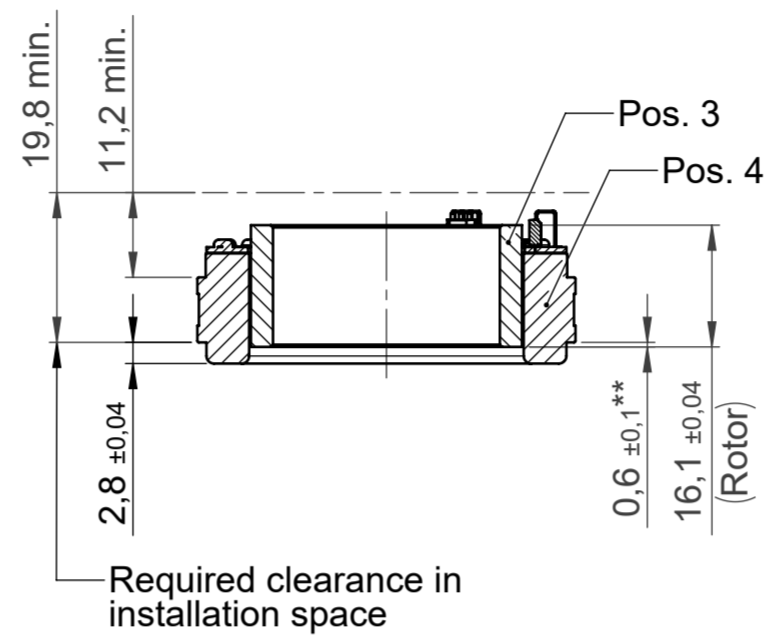


ILM50x08 SERVO KIT PCB
ILM50x08 SERVO KIT PCB-T

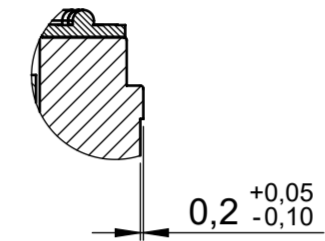
Section A-A

ILM50x08 SERVO KIT PCB-HD
ILM50x08 SERVO KIT PCB-HD-T

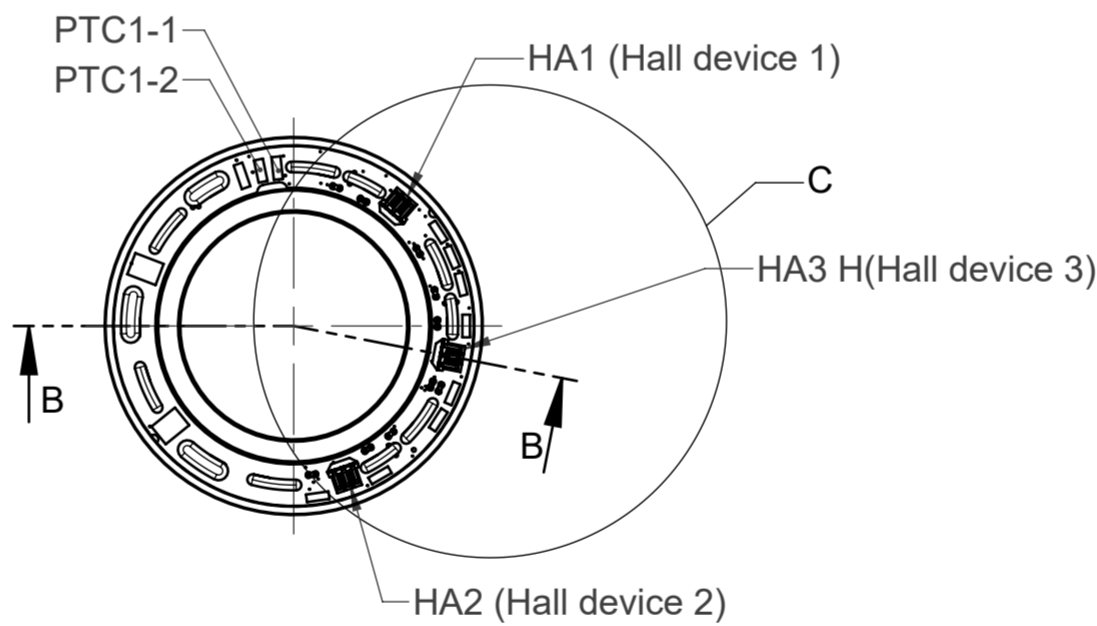
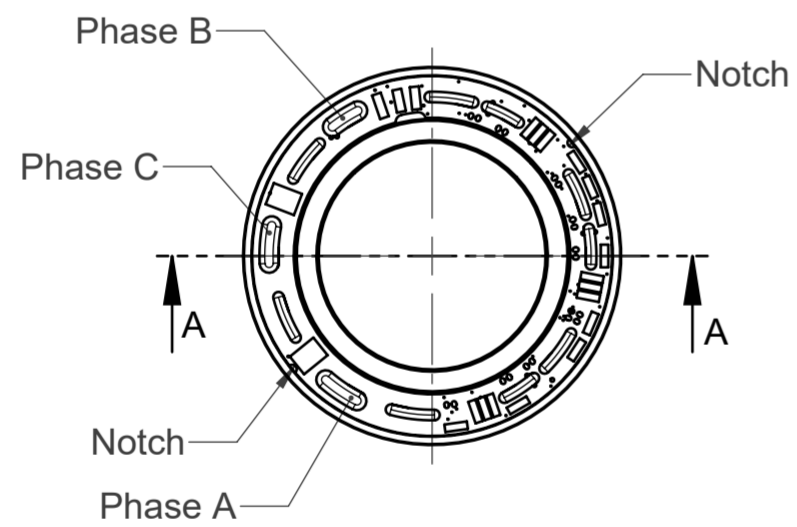
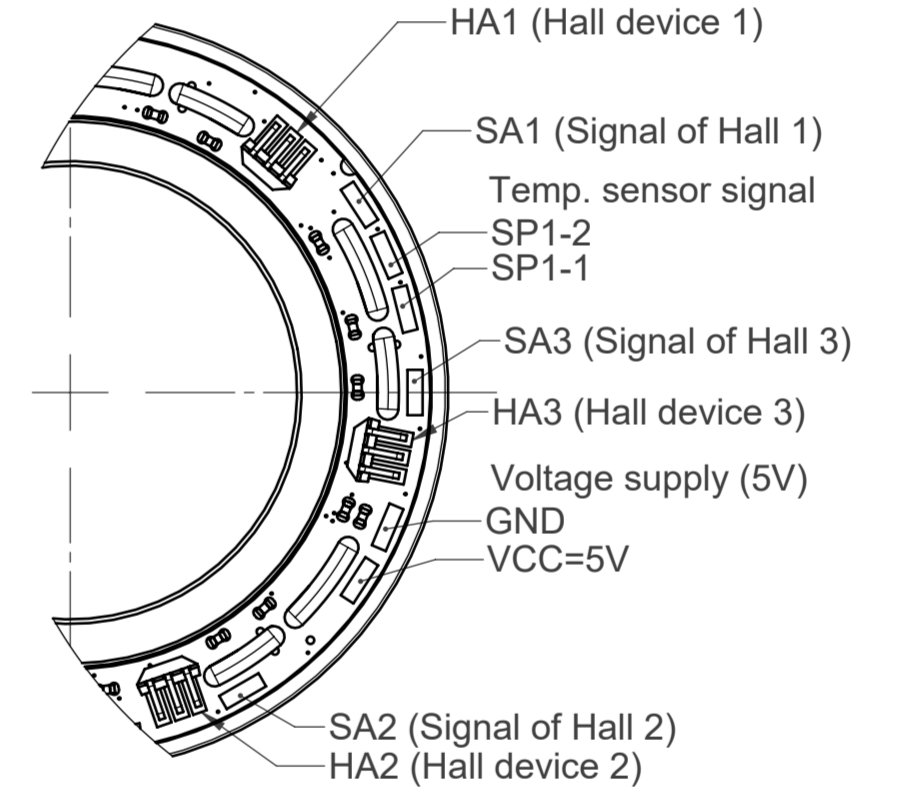
Section B-B



DETAIL D
Scale 2 : 1



DETAIL C
Scale 2:1



For further technical information please refer to the datasheet DRVA_DB-ILM-Kits_ILM50x08_Rev200

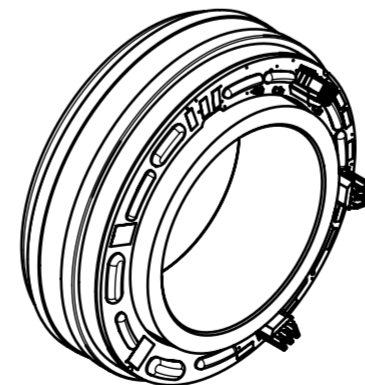
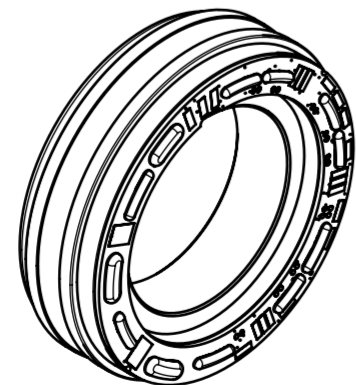
* In assembly


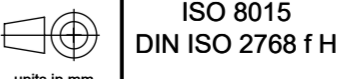
** Rotor position in relation to stator mounting edge

*** B-Side mounting requires additional TQ design support

Housing and shaft design according to installation dimensions of motor housing and motor shaft.

Compliant to EU-RoHS and EU-REACH, latest edition.



ECR Number		ECR Name		ECR Description		Engineering code E-00106243.01			
		Date	Name	Material					
		Prepared	03.04.2019	MeindIA					
		Checked	13.09.2019	Loos	Part name ILM50x08 SERVO KIT PCB Info				
		Approved	16.09.2019	Schwelle	Number		Rev.	Ind. Sheet	
units in mm		Confidentiality level		Scale		Format		317926.0100	
Mass 159.68g	Volume 33.86cm³	Scale 1:1		Format A2				1/4	

The reproduction, distribution and utilization of this document as well as the communication of its contents to others without express authorization is prohibited. All rights reserved in the event of the grant of a patent or utility model for design.

The reproduction, distribution and utilization of this document as well as the communication of its contents to others without express authorization is prohibited. Offenders will be held liable for the payment of damages. All rights reserved in the event of the grant of a patent, utility model or design.

ILM50x08 SERVO KIT PCB (Interconnection Type)

Identification	Position 1			Position 2		
	Order number	Order name	Amount	Order number	Order name	Amount
ILM50x08 SERVO KIT STD VSS	176110.0100	ILM50x08 Rotor	1	300493.0100	ILM50x08 Stator STD VSS	1
ILM50x08 SERVO KIT STD VSP	176110.0100	ILM50x08 Rotor	1	311735.0100	ILM50x08 Stator STD VSP	1
ILM50x08 SERVO KIT STD VDS	176110.0100	ILM50x08 Rotor	1	311583.0100	ILM50x08 Stator STD VDS	1
ILM50x08 SERVO KIT STD VDP	176110.0100	ILM50x08 Rotor	1	313296.0100	ILM50x08 Stator STD VDP	1
ILM50x08 SERVO KIT HS VSS	176110.0100	ILM50x08 Rotor	1	312889.0100	ILM50x08 Stator HS VSS	1
ILM50x08 SERVO KIT HS VSP	176110.0100	ILM50x08 Rotor	1	312897.0100	ILM50x08 Stator HS VSP	1
ILM50x08 SERVO KIT HS VDS	176110.0100	ILM50x08 Rotor	1	312904.0100	ILM50x08 Stator HS VDS	1
ILM50x08 SERVO KIT HS VDP	176110.0100	ILM50x08 Rotor	1	312915.0100	ILM50x08 Stator HS VDP	1

ILM50x08 SERVO KIT PCB-T (Option: Temperature sensor)

Identification	Position 1			Position 2		
	Order number	Order name	Amount	Order number	Order name	Amount
ILM50x08 SERVO KIT STD VSS-T	176110.0100	ILM50x08 Rotor	1	311773.0100	ILM50x08 Stator STD VSS-T	1
ILM50x08 SERVO KIT STD VSP-T	176110.0100	ILM50x08 Rotor	1	313310.0100	ILM50x08 Stator STD VSP-T	1
ILM50x08 SERVO KIT STD VDS-T	176110.0100	ILM50x08 Rotor	1	311536.0100	ILM50x08 Stator STD VDS-T	1
ILM50x08 SERVO KIT STD VDP-T	176110.0100	ILM50x08 Rotor	1	313312.0100	ILM50x08 Stator STD VDP-T	1
ILM50x08 SERVO KIT HS VSS-T	176110.0100	ILM50x08 Rotor	1	313304.0100	ILM50x08 Stator HS VSS-T	1
ILM50x08 SERVO KIT HS VSP-T	176110.0100	ILM50x08 Rotor	1	313305.0100	ILM50x08 Stator HS VSP-T	1
ILM50x08 SERVO KIT HS VDS-T	176110.0100	ILM50x08 Rotor	1	313306.0100	ILM50x08 Stator HS VDS-T	1
ILM50x08 SERVO KIT HS VDP-T	176110.0100	ILM50x08 Rotor	1	313308.0100	ILM50x08 Stator HS VDP-T	1

ILM50x08 SERVO KIT PCB-HD (Option: Digital Hall commutation)

Identification	Position 3			Position 4		
	Order number	Order name	Amount	Order number	Order name	Amount
ILM50x08 SERVO KIT STD VSS-HD	286834.0101	ILM50x14 Rotor	1	313227.0100	ILM50x08 Stator STD VSS-HD	1
ILM50x08 SERVO KIT STD VSP-HD	286834.0101	ILM50x14 Rotor	1	313293.0100	ILM50x08 Stator STD VSP-HD	1
ILM50x08 SERVO KIT STD VDS-HD	286834.0101	ILM50x14 Rotor	1	313294.0100	ILM50x08 Stator STD VDS-HD	1
ILM50x08 SERVO KIT STD VDP-HD	286834.0101	ILM50x14 Rotor	1	313297.0100	ILM50x08 Stator STD VDP-HD	1
ILM50x08 SERVO KIT HS VSS-HD	286834.0101	ILM50x14 Rotor	1	312894.0100	ILM50x08 Stator HS VSS-HD	1
ILM50x08 SERVO KIT HS VSP-HD	286834.0101	ILM50x14 Rotor	1	312898.0100	ILM50x08 Stator HS VSP-HD	1
ILM50x08 SERVO KIT HS VDS-HD	286834.0101	ILM50x14 Rotor	1	312906.0100	ILM50x08 Stator HS VDS-HD	1
ILM50x08 SERVO KIT HS VDP-HD	286834.0101	ILM50x14 Rotor	1	312917.0100	ILM50x08 Stator HS VDP-HD	1

ILM50x08 SERVO KIT PCB-HD-T (Option: Digital Hall commutation + Temperature sensor)

Identification	Position 3			Position 4		
	Order number	Order name	Amount	Order number	Order name	Amount
ILM50x08 SERVO KIT STD VSS-HD-T	286834.0101	ILM50x14 Rotor	1	312080.0100	ILM50x08 Stator STD VSS-HD-T	1
ILM50x08 SERVO KIT STD VSP-HD-T	286834.0101	ILM50x14 Rotor	1	313300.0100	ILM50x08 Stator STD VSP-HD-T	1
ILM50x08 SERVO KIT STD VDS-HD-T	286834.0101	ILM50x14 Rotor	1	313301.0100	ILM50x08 Stator STD VDS-HD-T	1
ILM50x08 SERVO KIT STD VDP-HD-T	286834.0101	ILM50x14 Rotor	1	313302.0100	ILM50x08 Stator STD VDP-HD-T	1
ILM50x08 SERVO KIT HS VSS-HD-T	286834.0101	ILM50x14 Rotor	1	312920.0100	ILM50x08 Stator HS VSS-HD-T	1
ILM50x08 SERVO KIT HS VSP-HD-T	286834.0101	ILM50x14 Rotor	1	312085.0100	ILM50x08 Stator HS VSP-HD-T	1
ILM50x08 SERVO KIT HS VDS-HD-T	286834.0101	ILM50x14 Rotor	1	313288.0100	ILM50x08 Stator HS VDS-HD-T	1
ILM50x08 SERVO KIT HS VDP-HD-T	286834.0101	ILM50x14 Rotor	1	313291.0100	ILM50x08 Stator HS VDP-HD-T	1

Product configuration code:

ILM50x08 SERVO KIT XXX YYY - HD - T

Lamination grade:

STD Standard
HS High Speed

Interconnection:

VSS Star-Serial
VSP Star-Parallel
VDS Delta-Serial
VDP Delta-Parallel


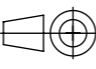
Feedback:

HD Hall Digital

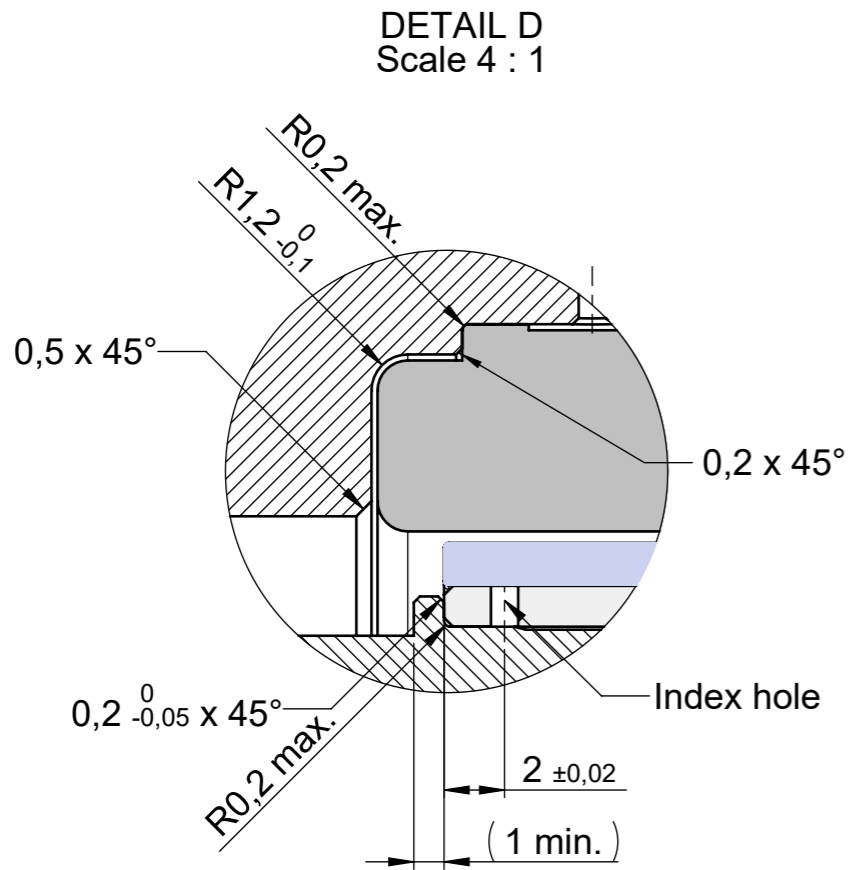
Configuration:

T Temperature sensor

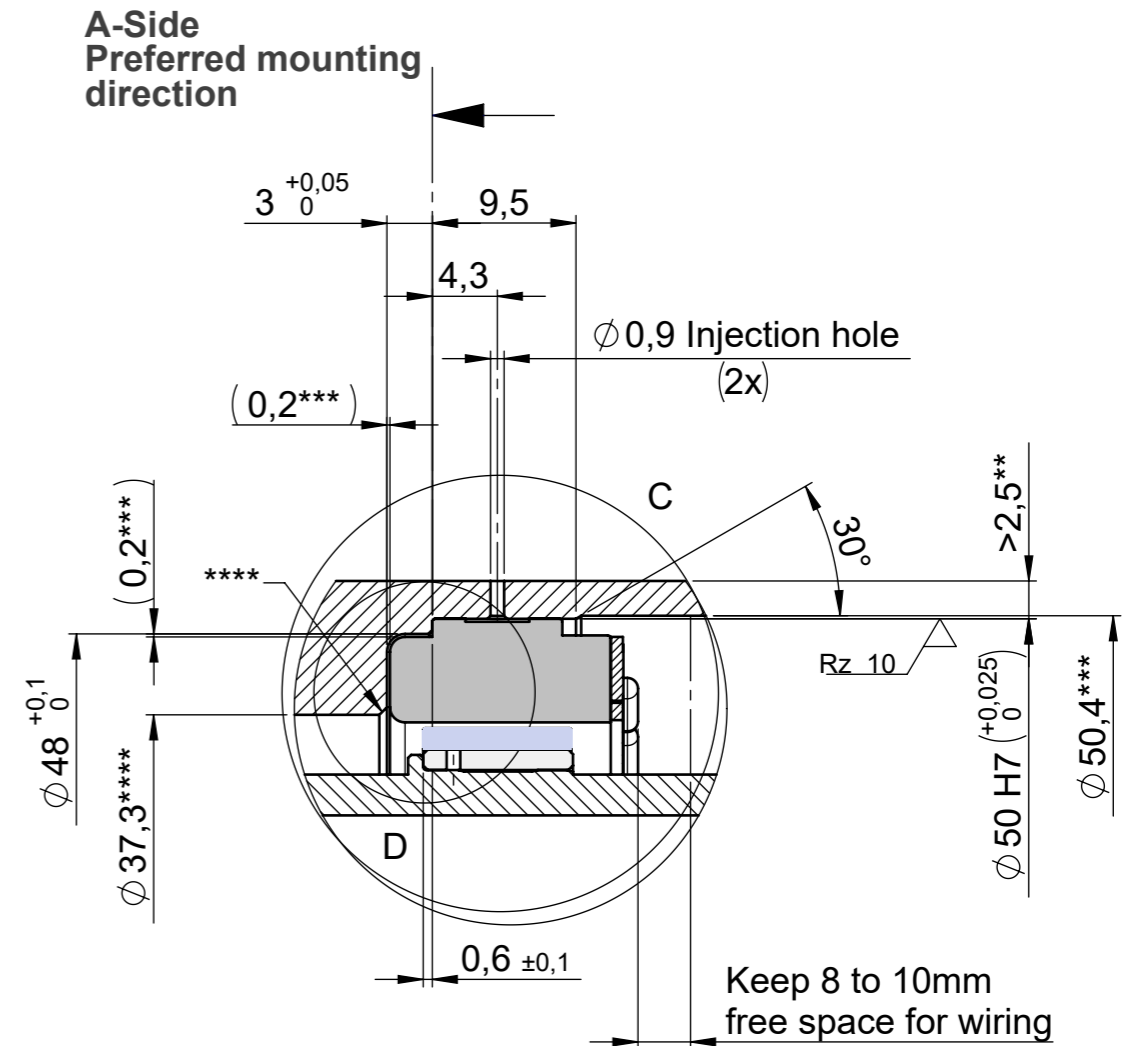
Compliant to EU-RoHS and EU-REACH, latest edition.

ECR Number		ECR Name		ECR Description		Engineering code E-00106243.01				
		Date	Name	Material						
		Prepared	03.04.2019	MeindlA						
		Checked	13.09.2019	Loos	Part name ILM50x08 SERVO KIT PCB Info					
 ISO 8015 DIN ISO 2768 f H		Approved	16.09.2019	Schwelle	Number			Rev.	Ind.	Sheet
Mass	Volume	Confidentially level		Scale 1:1		Format A3		317926.0100		2/4

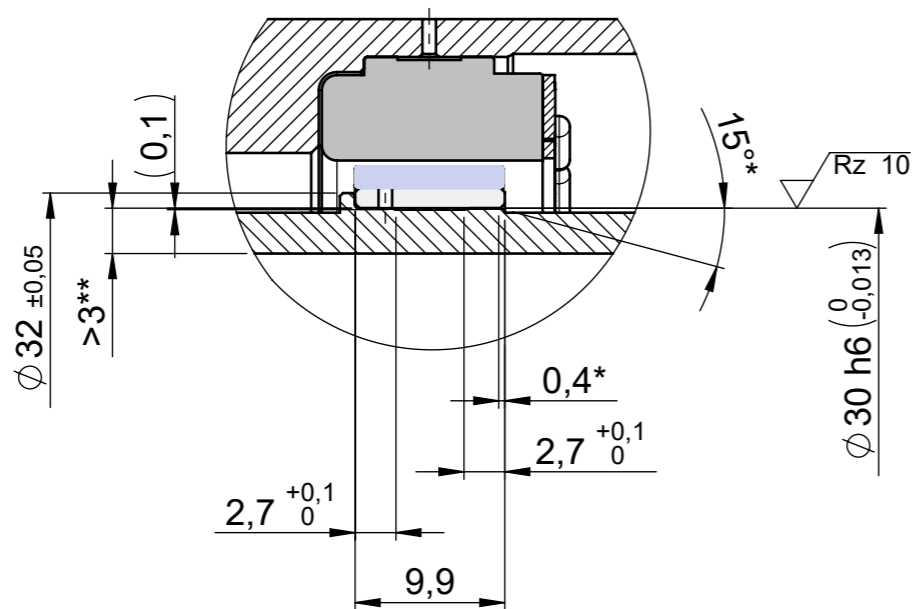
The reproduction, distribution and utilization of this document as well as the communication of its contents to others without express authorization is prohibited. Offenders will be held liable for the payment of damages. All rights reserved in the event of a patent, utility model or design.



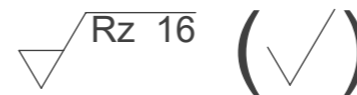
DETAIL B
Scale 2 : 1



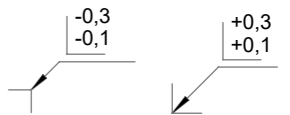
DETAIL C
Scale 2 : 1





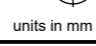
- * Recommended slip bevel
- ** Recommended wall thickness
- *** Suggested dimension for air and creeping distances (<50V) UL and NRTL certification
- **** Proposal to simplify cleaning after gluing



DIN ISO 13715



Compliant to EU-RoHS and EU-REACH, latest edition.

ECR Number		ECR Name		ECR Description		Engineering code E-00106243.01			
		Date	Name	Material					
		Prepared	03.04.2019	MeindlA					
		Checked	13.09.2019	Loos	Part name ILM50x08 Einbau Stator PCB / PCB-T - Rotor				
 ISO 8015 DIN ISO 2768 f H		Approved	16.09.2019	Schwelle	Number			Rev.	Ind. Sheet
 Confidentiality level		Scale 1:1		Format A3	317926.0100				
Mass	Volume							3/4	

